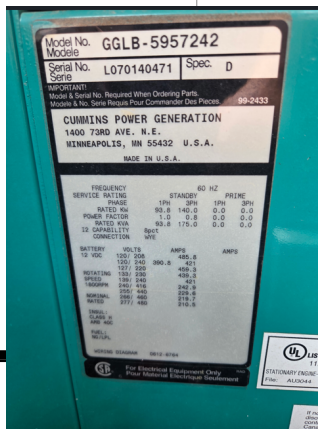


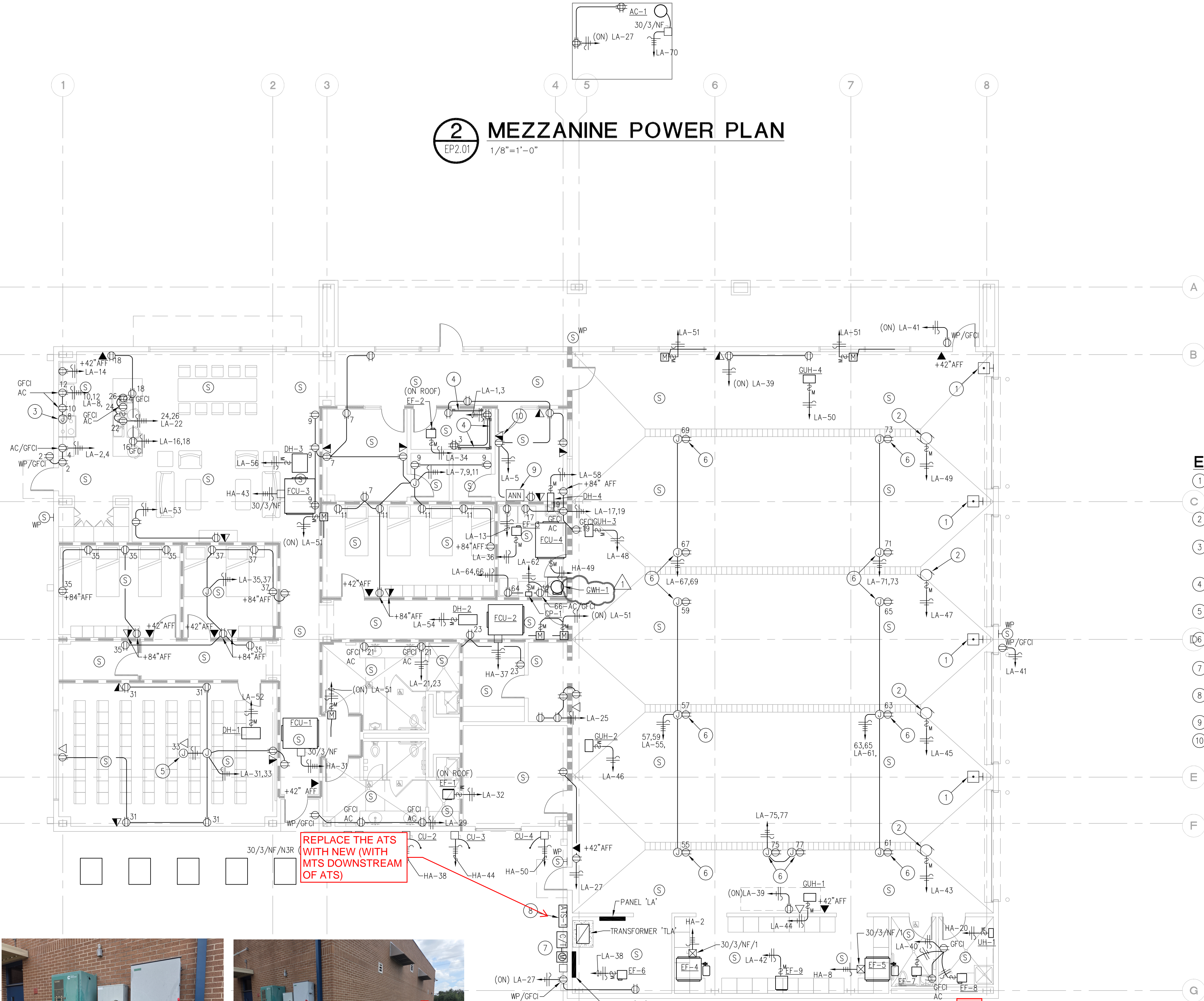


ONE CA FIELD VISIT SHALL BE INCLUDED TO REVIEW THE INSTALL



2 MEZZANINE POWER PLAN

EP2.01 1/8"=1'-0"



ELECTRICAL KEYED NOTES:

- OVERHEAD DOOR CONTROLLER PROVIDED BY DOOR CONTRACTOR AND INSTALLED BY DIVISION 16. REFER TO MANUFACTURE'S REQUIREMENTS FOR INSTALLATION. (TYPICAL)
- CONTRACTOR SHALL COORDINATE LOCATION OF OVERHEAD DOOR WITH EQUIPMENT MANUFACTURER. (TYPICAL)
- JUNCTION BOX FOR CONNECTION OF VENT HOOD. COORDINATE EXACT HEIGHT WITH MILLWORK AND EQUIPMENT MANUFACTURERS INSTALLATION INSTRUCTIONS PRIOR TO ROUGH-IN.
- PROVIDE 4'X8'X3/4" FIRE RATED PLYWOOD PAINTED TO MATCH WALL TELEPHONE BOARD.
- PROVIDE J-BOX ABOVE CEILING FOR PROJECTOR LOCATION. COORDINATE EXACT LOCATION WITH OWNER/ARCHITECT PRIOR TO ROUGH-IN.
- PROVIDE CORD REEL WITH 120V DUPLEX RECEPTACLE AT THIS LOCATION. RE:10/E3.01 FOR ADDITIONAL INFORMATION.
- APPROXIMATE LOCATION OF FUSED SERVICE DISCONNECT, C/T CABINET AND POWER COMPANY METER.
- APPROXIMATE LOCATION OF AUTOMATIC TRANSFER SWITCH ATS-1 UNDER ALTERNATE #6.
- PROPOSED LOCATION OF GENERATOR ANNUNCIATOR PANEL.
- MOUNT RECEPTACLE AND DATA DROP HIGH ON WALL FOR CONNECTION OF TIME CLOCK. COORDINATE EXACT LOCATION WITH ARCHITECT PRIOR TO ROUGH-IN.

1 ELECTRICAL POWER PLAN

EP2.01 1/8"=1'-0"

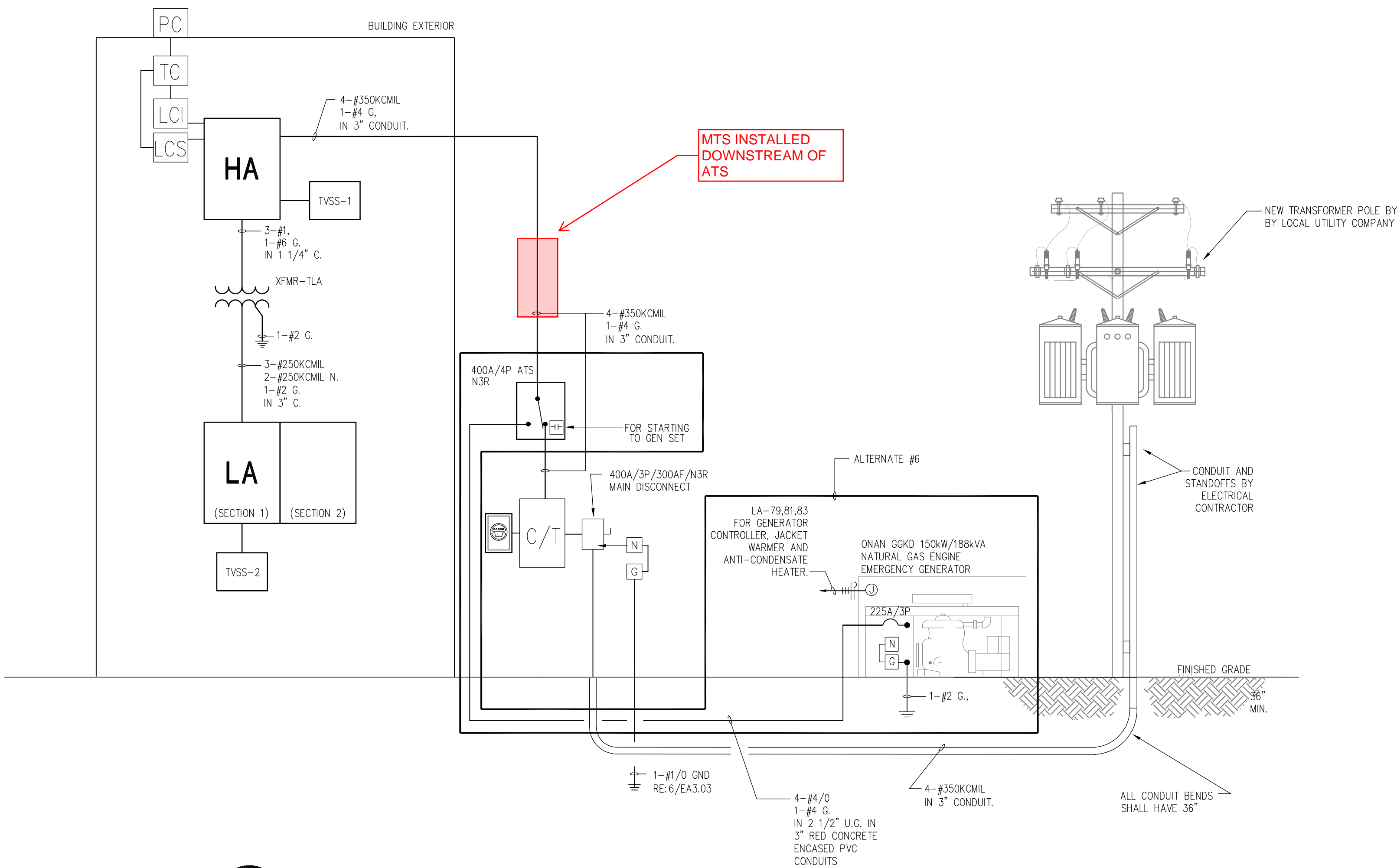
9/15/06 ISSUED FOR 100% REVIEW
11/17/06 CONSTRUCTION DOCUMENTS FOR ISSUE

NEW FIRE STATION #12
Cy-Fair Volunteer Fire Department
Harris County Emergency Services District No. 9

DATE
6/01/06

PROJECT NO.
05015

EP
201



1 ELECTRICAL ONE LINE AND SCHEDULES
E3.01 NOT TO SCALE

FIRE STATION #12 LIGHT FIXTURE SCHEDULE						
TYPE	MANUFACTURER	MOUNTING	LAMPS	VOLTS	REMARKS	NOTES
A1	LIGHTOLIER #SPS2GFSVA332-277-HI	RECESSED	(3) F032/835/XPIECO	277	2'x4' LINEAR FLOURESCENT RECESSED LIGHT FIXTURE WITH (1) 1 LAMP AND (1) 2 LAMP. PROGRAM START BALLAST RATED AT 10% OR LESS THD.	
A2	LIGHTOLIER #SPS2GFSVA232-277-HI	RECESSED	(2) F032/835/XPIECO	277	2'x4' LINEAR FLOURESCENT RECESSED LIGHT FIXTURE WITH (1) 2 LAMP. PROGRAM START BALLAST RATED AT 10% OR LESS THD.	
A3	LIGHTOLIER #SPS2GFSVA332-277-H3-3G	RECESSED	(3) F032/835/XPIECO	277	2'x4' LINEAR FLOURESCENT RECESSED LIGHT FIXTURE WITH (1) 3 LAMP. PROGRAM START BALLAST RATED AT 10% OR LESS THD.	
B1	LIGHTOLIER #TF4A232-277-HI	PENDANT	(2) F032/835/XPIECO	277	4' LINEAR FLUORESCENT INDUSTRIAL STRIP FIXTURE WITH 15% UP LIGHT. PROVIDE CHAIN HANGER KIT #A45 CSP AND WIRE GUARD KIT #AVG5W CSP. PROVIDE (1) 2 LAMP PROGRAM START BALLAST.	
B2	LIGHTOLIER #JS4A232-277-HI	PENDANT	(2) F032/835/XPIECO	277	4' LINEAR FLUORESCENT LENSED FIXTURE WITH (1) 2 LAMP PROGRAM START BALLAST.	
B3	LIGHTOLIER #ST8WA254-277-PV-EM	PENDANT	(4) F032/835/XPIECO	277	8' LINEAR FLUORESCENT WET LOCATION LISTED FIXTURE WITH REINFORCED POLY ESTER FIBERGLASS HOUSING AND HIGH IMPACT DR ACRYLIC LENSE. PROVIDE (1) 4 LAMP PROGRAM START BALLAST.	
C	LIGHTOLIER #SPS2GFSVA26U-277-HI	RECESSED	(2) FB032/835XP6	277	2' X 2' FLUORESCENT LIGHT FIXTURE WITH .125" THICK ACRYLIC LENSE.	
D1	LIGHTOLIER #8098DVWH-8242UV	RECESSED	(2) CF32DT/EIN/835	277	9" DIAMETER VANDAL RESISTANT, WET LOCATION LISTED DROP LENSE FIXTURE.	
D2	LIGHTOLIER #8098VWH-8242UV	RECESSED	(2) CF32DT/EIN/835	277	9" DIAMETER VANDAL RESISTANT, WET LOCATION LISTED FLUSH LENSE FIXTURE.	
F	QUALITY LIGHTING #FL32-5X4-MH-400-BK277-YBSF-FD-BLS	GRADE	(1) MS400/HOR	277	GROUND MOUNTED FLAG POLE SPOT LIGHT. CONTRACTOR SHALL PROVIDE 2" PIPE BURIED IN GROUND FOR MOUNTING OF YOKE BRACKET.	
G	KENALL #H1212D-C-DB-32P-2-277	SURFACE	(2) CF32DT/EIN/835	277	12" SQUARE, WET LOCATION LISTED HIGH ABUSE LIGHT FIXTURE.	
J	QUALITY LIGHTING #PDM24-4-MH250-SL-277-CWB-187C-FD	WALL	(1) 250W MH	277	WALL MOUNTED HID LIGHT FIXTURE.	
S1	QUALITY LIGHTING #PDM24-S-MH400-SL-480-SA-187C-FD	POLE	(1) MS400/HOR/BT28	480	POLE MOUNTED HID LIGHT FIXTURE WITH SQUARE THROW DISTRIBUTION. PROVIDE A 20 FOOT POLE. KWSSP20-5.0-7-BRZ-DM10 ON A 2'-6" BASE. VERIFY FINISH WITH ARCHITECT PRIOR TO ORDERING.	
X1	EMERGH-LITE #WW-SVXN-1-R	SURFACE	L.E.D. SUPPLIED	277	SURVIVE ALL SERIES. SINGLE FACE. NEMA 4X, EXIT SIGN. KNOCK OUT CHEVRONS AS INDICATED ON DRAWINGS.	
X2	EMERGH-LITE #WW-SVXN-2-R	SURFACE	L.E.D. SUPPLIED	277	SURVIVE ALL SERIES. DOUBLE FACE. NEMA 4X, EXIT SIGN. KNOCK OUT CHEVRONS AS INDICATED ON DRAWINGS.	

TVSS SCHEDULE			
MARK	MANUFACTURER	MODEL	LIEBERT ACCUGUIDE CABLE SIZE
TVSS 1	LIEBERT	AL-277Y-111	5 #10, 1 1/2" C.
TVSS 2	LIEBERT	AL-120Y-111	5 #10, 1 1/2" C.

TRANSFORMER SCHEDULE					
MARK	KVA	PRIMARY	SECONDARY	MOUNTING	REMARKS
TLA	75	480V, 3PH	208Y/120V, 3PH, 4W	PAD	HARMONIC MITIGATING TYPE, PQT#DV, SERIES WITH 0 DEGREE PHASE SHIFT

FIRE STATION #12 - LOAD ANALYSIS				Date: 6/26/2006	
480 / 277 , 3 -PHASE 4 -WIRE					
DESCRIPTION				NEC	KVA
LIGHTING:					
INTERIOR =				220-10(b)	39.0
EXTERIOR =				220-10(b)	3.8
POWER:					
RECEPTACLES =				220-13	8.9
MISCELLANEOUS =					26.7
				QUANTITY	
KITCHEN =				220-20	11.3
HVAC:					
COOLING =				220-21	30.0
HEATING =				220-21	0.0
FANS =				220-21	8.9
25% LARGEST MOTOR =				220-14	7.1
PLUMBING:					
WATER HEATER =					18.0
DRINKING FOUNTAIN =					3.0
CIRCULATING PUMP =					0.5
				TOTAL =	157.0
				TOTAL AMPS:	188.9
				SERVICE SIZE:	400.0
				SPARE AMPACITY	211.1
SQUARE FOOTAGE = 8,903					

9/15/06 ISSUED FOR 100% REVIEW
11/17/06 CONSTRUCTION DOCUMENTS FOR ISSUE

NEW FIRE STATION #12
Cy-Fair Volunteer Fire Department
Harris County Emergency Services District No. 9

DATE
6/01/06

PROJECT NO.
05015

E

301