



CITYGATE  
FIRE & EMS

FIRE SERVICES MASTER PLAN,  
COMMUNITY RISK ASSESSMENT,  
STANDARD OF COVER, AND  
COMPLIANCE AUDIT

VOLUME 3 OF 4: MAP ATLAS

CY-FAIR FIRE DEPARTMENT

OCTOBER 30, 2023



CITYGATE  
FIRE & EMS

[WWW.CITYGATEASSOCIATES.COM](http://WWW.CITYGATEASSOCIATES.COM)

600 COOLIDGE DRIVE, SUITE 150  
FOLSOM, CA 95630

PHONE: (916) 458-5100  
FAX: (916) 983-2090



# CY-FAIR FIRE DEPARTMENT

## MAP #1 - GENERAL GEOGRAPHY

**LEGEND**

**Station Type:**

Engine, Medic

Engine, Medic, Rescue

Engine, Medic, Ladder/Tower

Engine, Medic, Ladder/Tower,  
EMS Supervisor/Chief

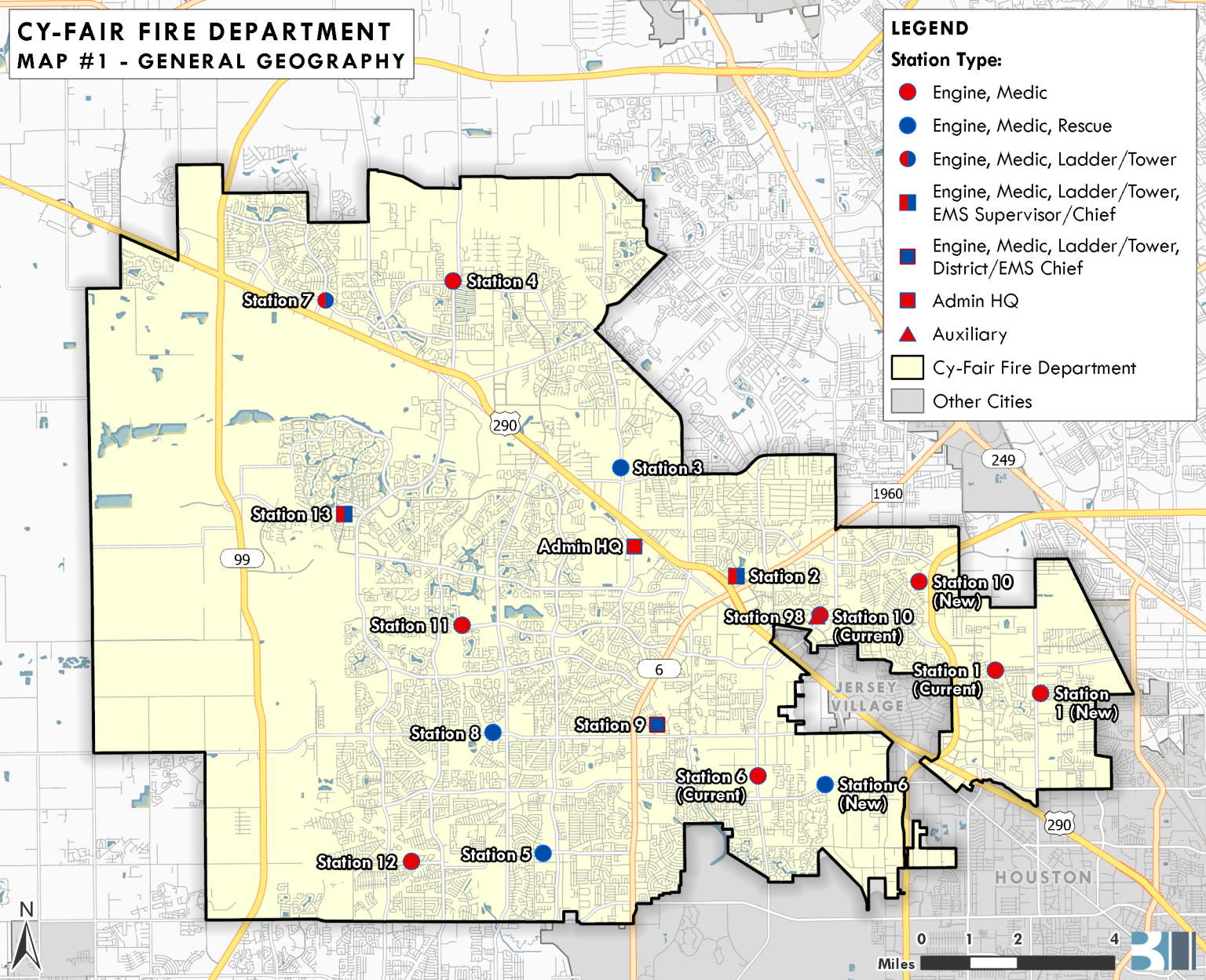
Engine, Medic, Ladder/Tower,  
District/EMS Chief

Admin HQ

Auxiliary

Cy-Fair Fire Department

Other Cities

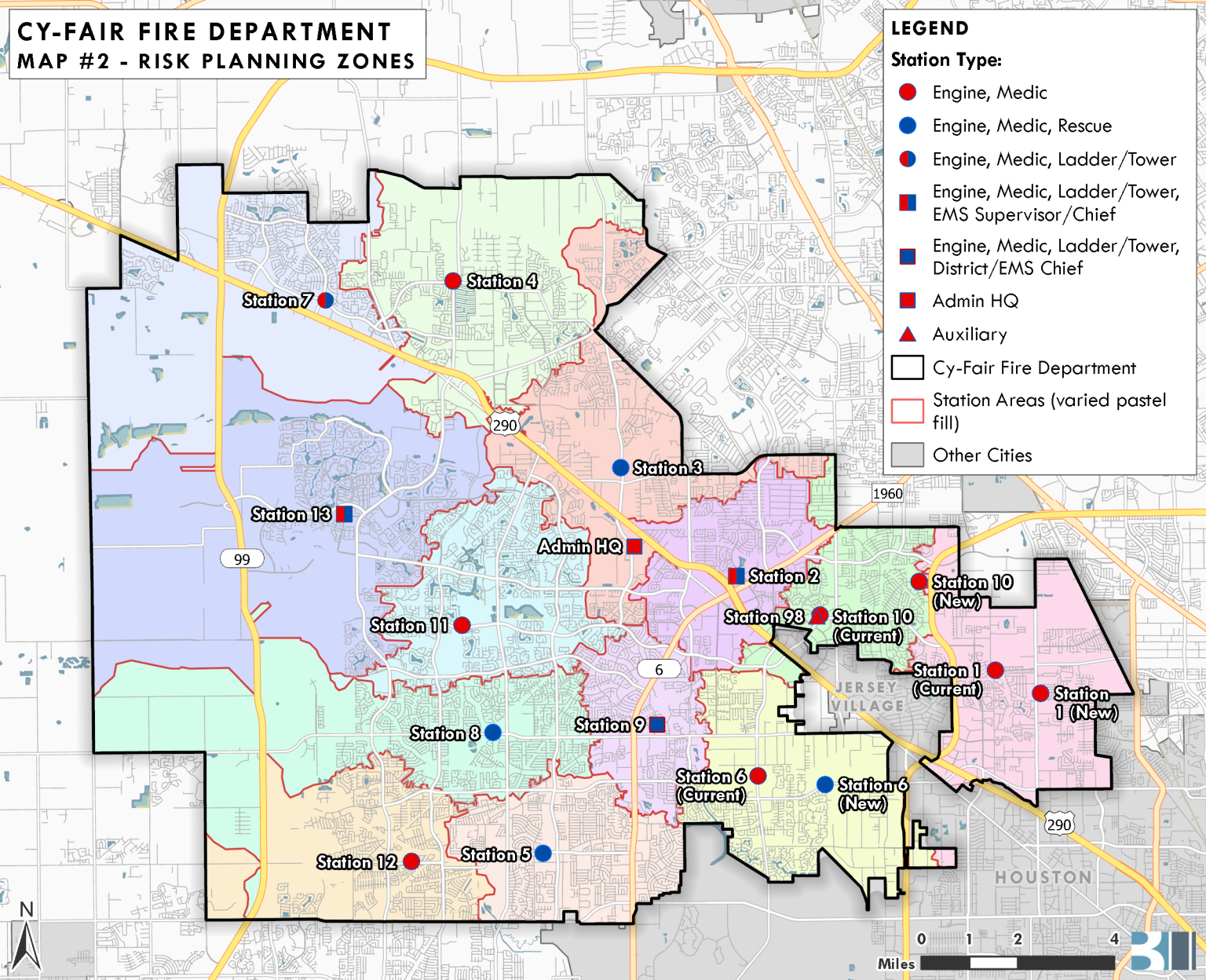


**CY-FAIR FIRE DEPARTMENT  
MAP #2 - RISK PLANNING ZONES**

**LEGEND**

**Station Type:**

- Engine, Medic
- Engine, Medic, Rescue
- Engine, Medic, Ladder/Tower
- Engine, Medic, Ladder/Tower, EMS Supervisor/Chief
- Engine, Medic, Ladder/Tower, District/EMS Chief
- Admin HQ
- ▲ Auxiliary
- Cy-Fair Fire Department
- Station Areas (varied pastel fill)
- Other Cities



# CY-FAIR FIRE DEPARTMENT

## MAP #2A - POPULATION DENSITY

### LEGEND

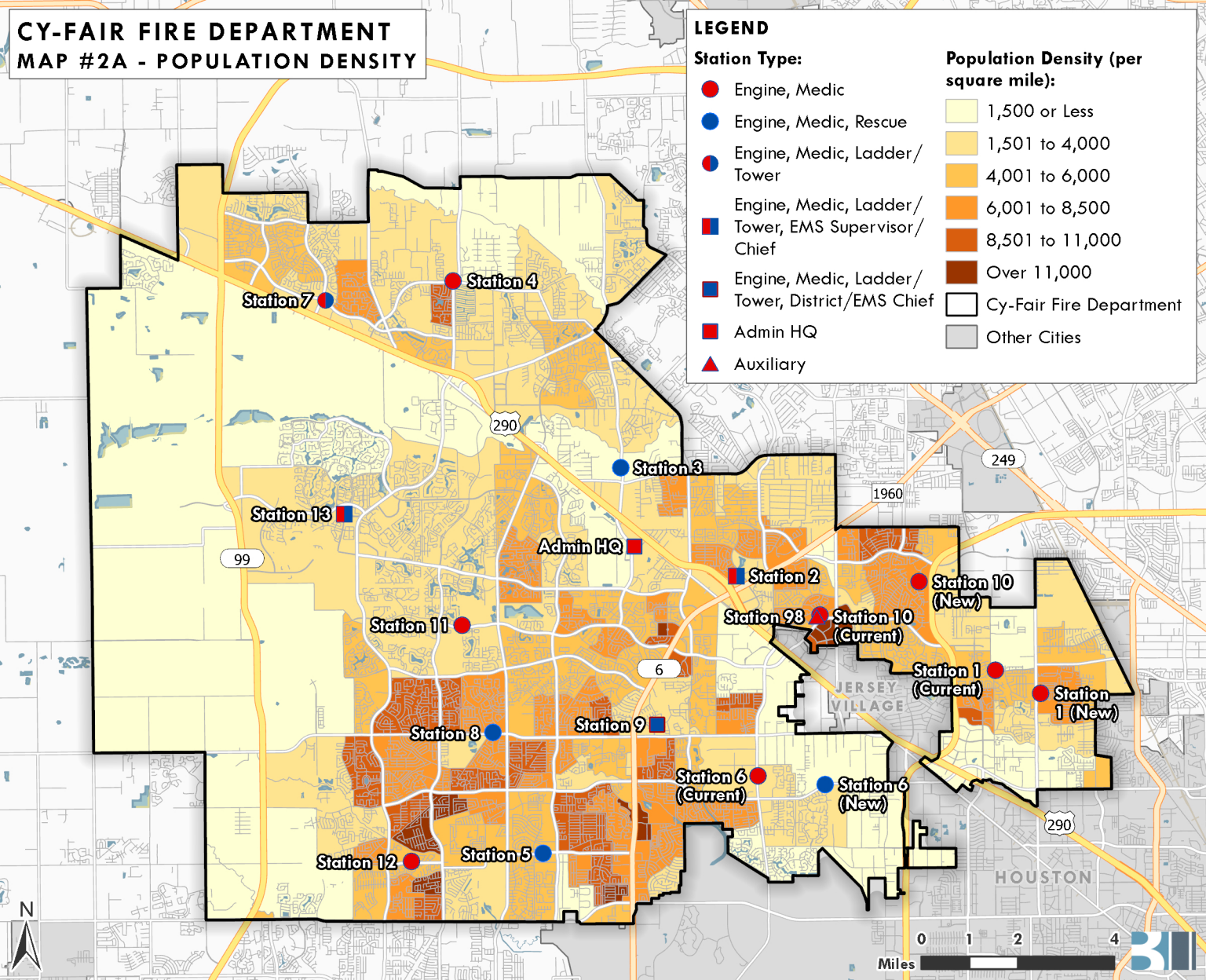
#### Station Type:

- Engine, Medic
- Engine, Medic, Rescue
- Engine, Medic, Ladder/  
Tower
- Engine, Medic, Ladder/  
Tower, EMS Supervisor/  
Chief
- Engine, Medic, Ladder/  
Tower, District/EMS Chief
- Admin HQ
- ▲ Auxiliary

#### Population Density (per square mile):

- 1,500 or Less
- 1,501 to 4,000
- 4,001 to 6,000
- 6,001 to 8,500
- 8,501 to 11,000
- Over 11,000

- Cy-Fair Fire Department
- Other Cities



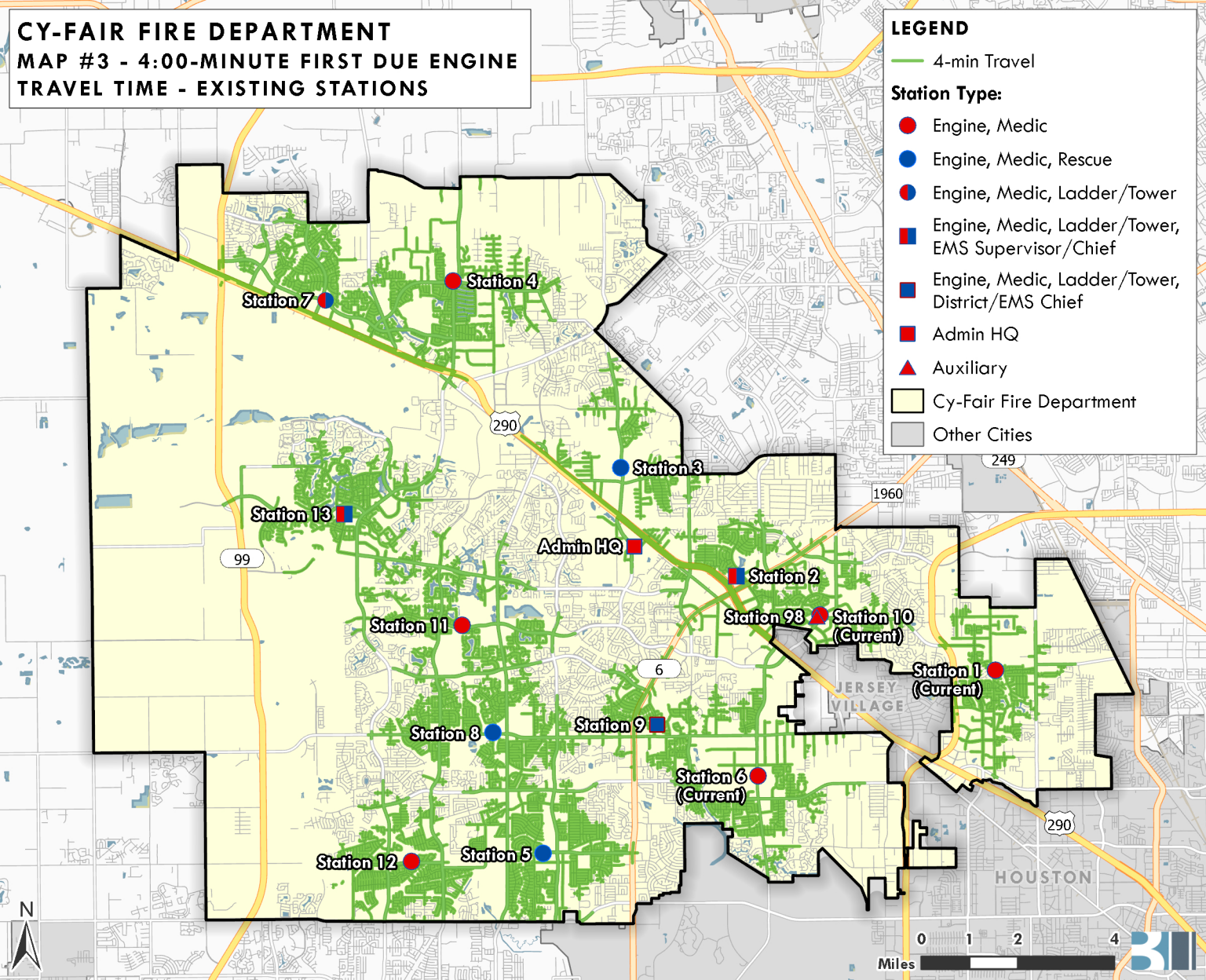
**CY-FAIR FIRE DEPARTMENT**  
**MAP #3 - 4:00-MINUTE FIRST DUE ENGINE**  
**TRAVEL TIME - EXISTING STATIONS**

**LEGEND**

— 4-min Travel

**Station Type:**

- Engine, Medic
- Engine, Medic, Rescue
- Engine, Medic, Ladder /Tower
- Engine, Medic, Ladder /Tower, EMS Supervisor /Chief
- Engine, Medic, Ladder /Tower, District /EMS Chief
- Admin HQ
- ▲ Auxiliary
- Cy-Fair Fire Department
- Other Cities



**CY-FAIR FIRE DEPARTMENT**  
**MAP #3A - 4:00-MINUTE FIRST DUE**  
**ENGINE TRAVEL TIME INCLUDING**  
**AUTO AID- EXISTING STATIONS**

**LEGEND**

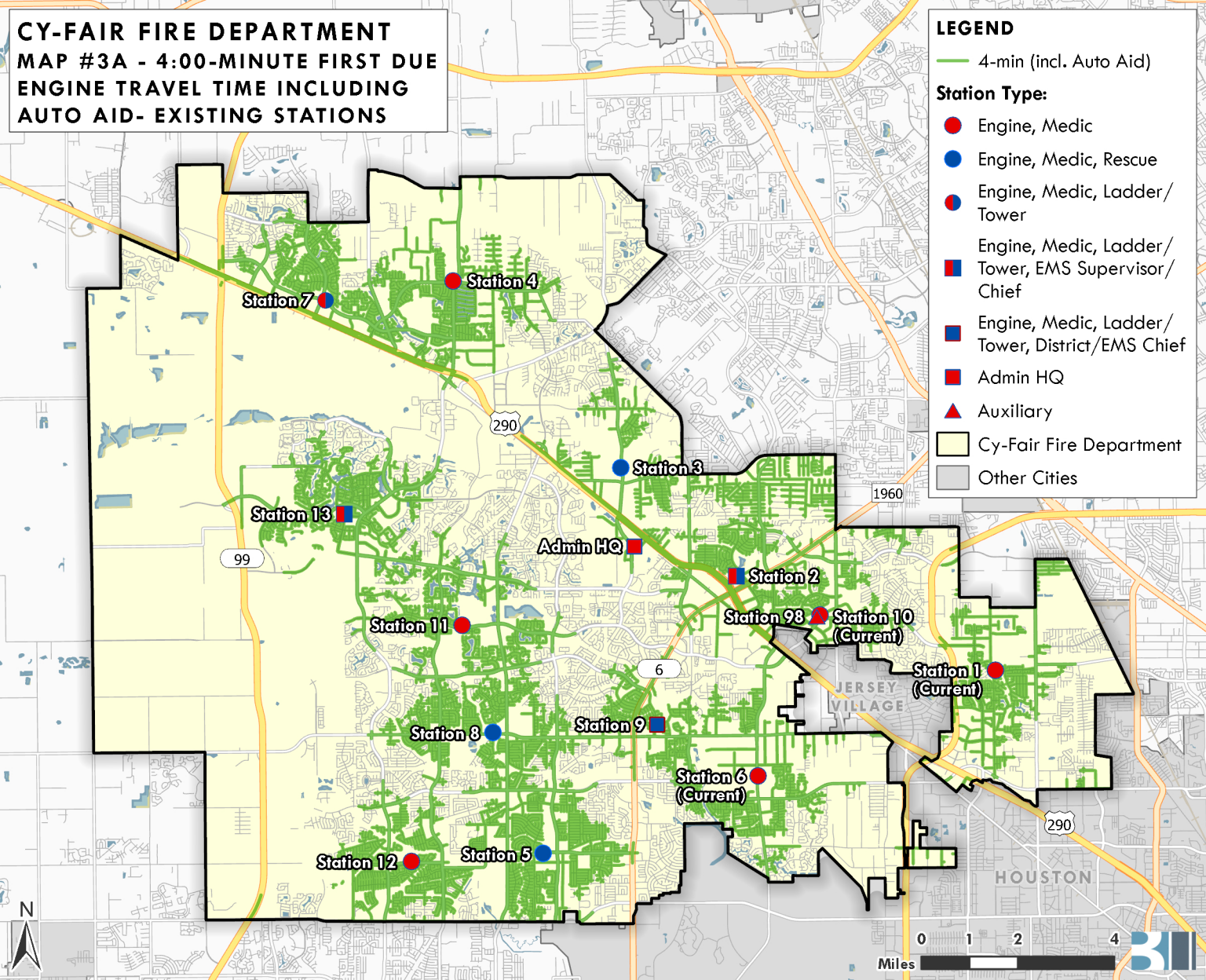
— 4-min (incl. Auto Aid)

**Station Type:**

- Engine, Medic
- Engine, Medic, Rescue
- Engine, Medic, Ladder/  
Tower
- Engine, Medic, Ladder/  
Tower, EMS Supervisor/  
Chief
- Engine, Medic, Ladder/  
Tower, District/EMS Chief
- Admin HQ
- ▲ Auxiliary

■ Cy-Fair Fire Department

■ Other Cities



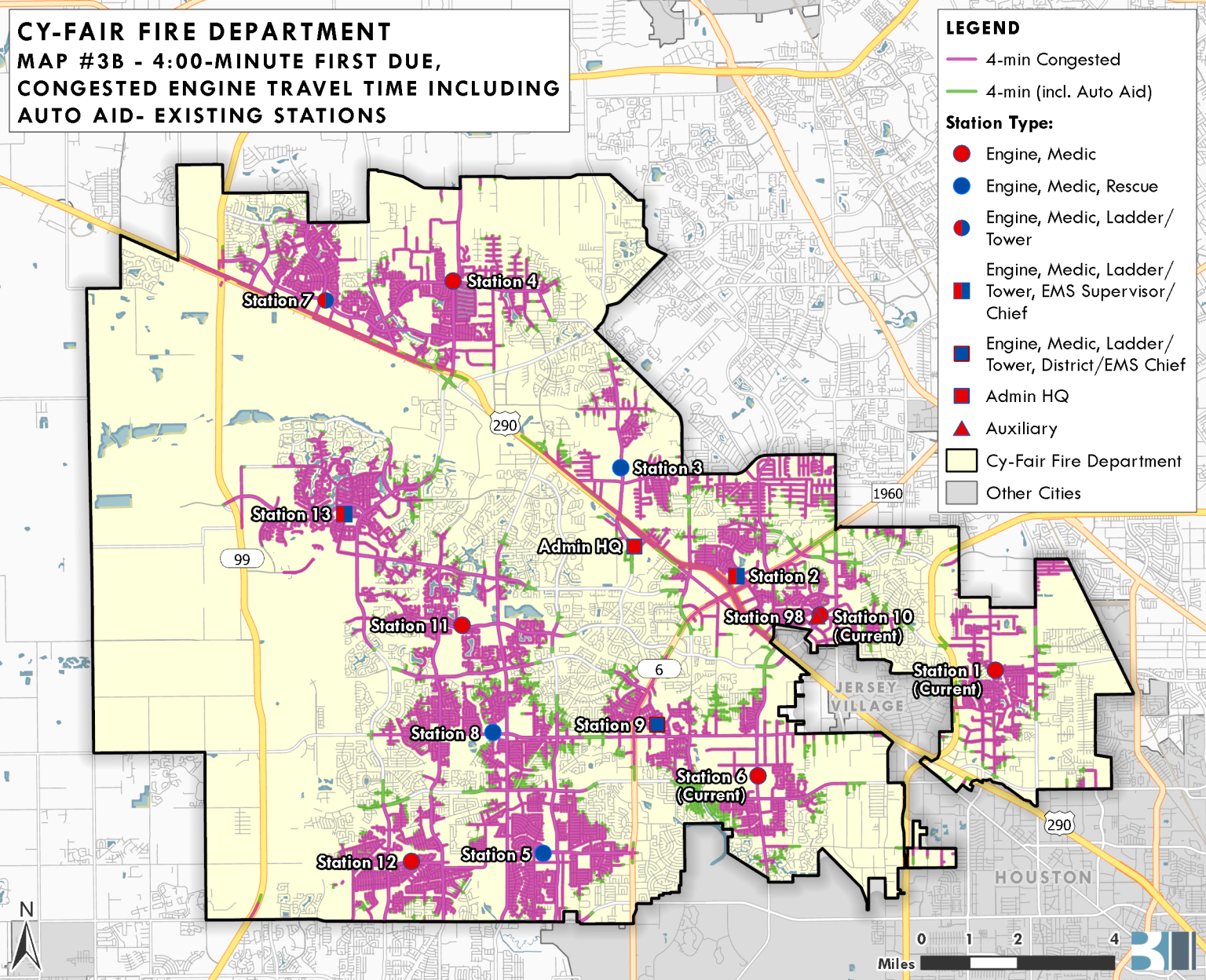
**CY-FAIR FIRE DEPARTMENT**  
**MAP #3B - 4:00-MINUTE FIRST DUE,**  
**CONGESTED ENGINE TRAVEL TIME INCLUDING**  
**AUTO AID- EXISTING STATIONS**

**LEGEND**

- 4-min Congested
- 4-min (incl. Auto Aid)

**Station Type:**

- Engine, Medic
- Engine, Medic, Rescue
- Engine, Medic, Ladder/  
Tower
- Engine, Medic, Ladder/  
Tower, EMS Supervisor/  
Chief
- Engine, Medic, Ladder/  
Tower, District/EMS Chief
- Admin HQ
- Auxiliary
- Cy-Fair Fire Department
- Other Cities



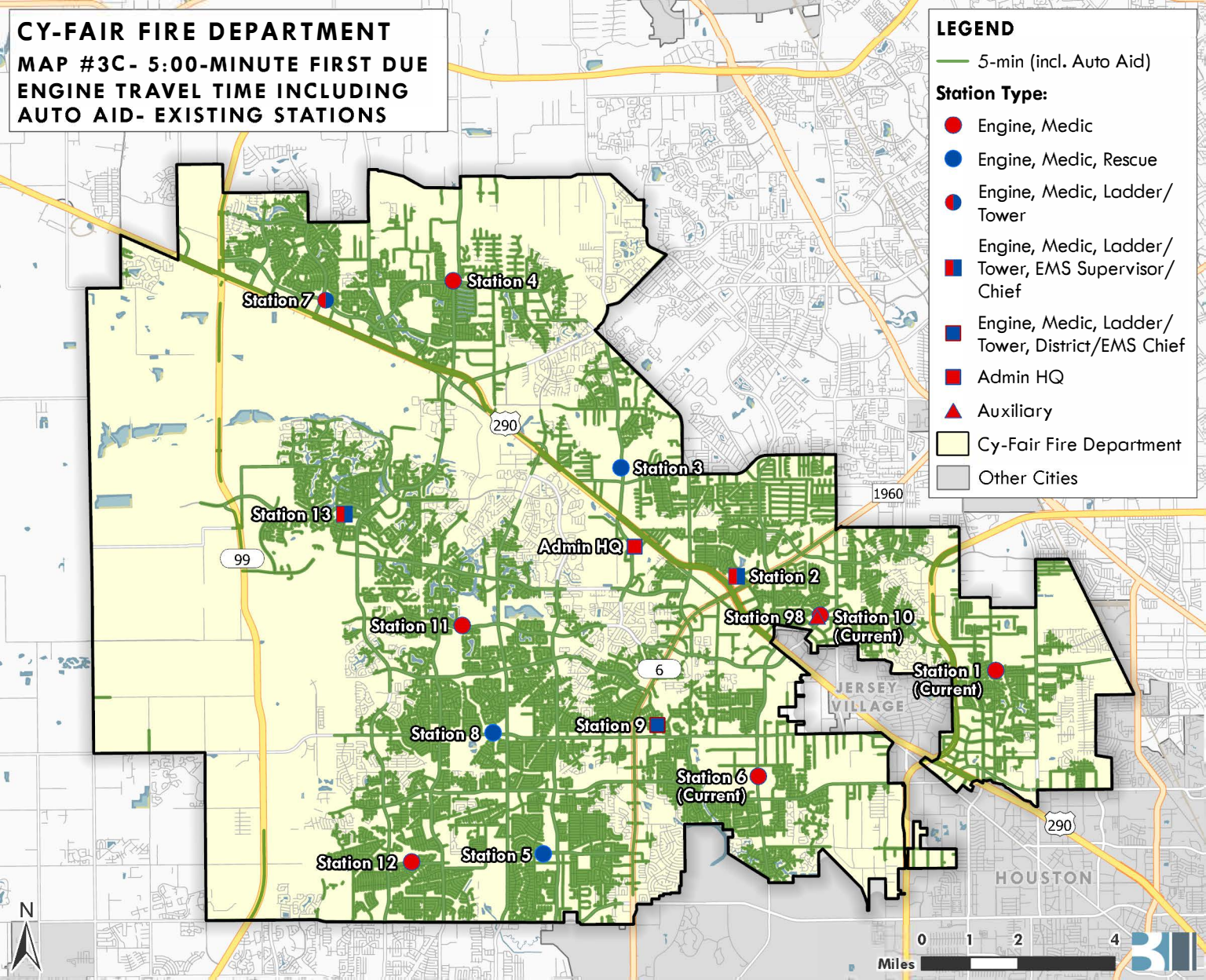
**CY-FAIR FIRE DEPARTMENT**  
**MAP #3C- 5:00-MINUTE FIRST DUE**  
**ENGINE TRAVEL TIME INCLUDING**  
**AUTO AID- EXISTING STATIONS**

**LEGEND**

— 5-min (incl. Auto Aid)

**Station Type:**

- Engine, Medic
- Engine, Medic, Rescue
- Engine, Medic, Ladder/  
Tower
- Engine, Medic, Ladder/  
Tower, EMS Supervisor/  
Chief
- Engine, Medic, Ladder/  
Tower, District/EMS Chief
- Admin HQ
- ▲ Auxiliary
- Cy-Fair Fire Department
- Other Cities



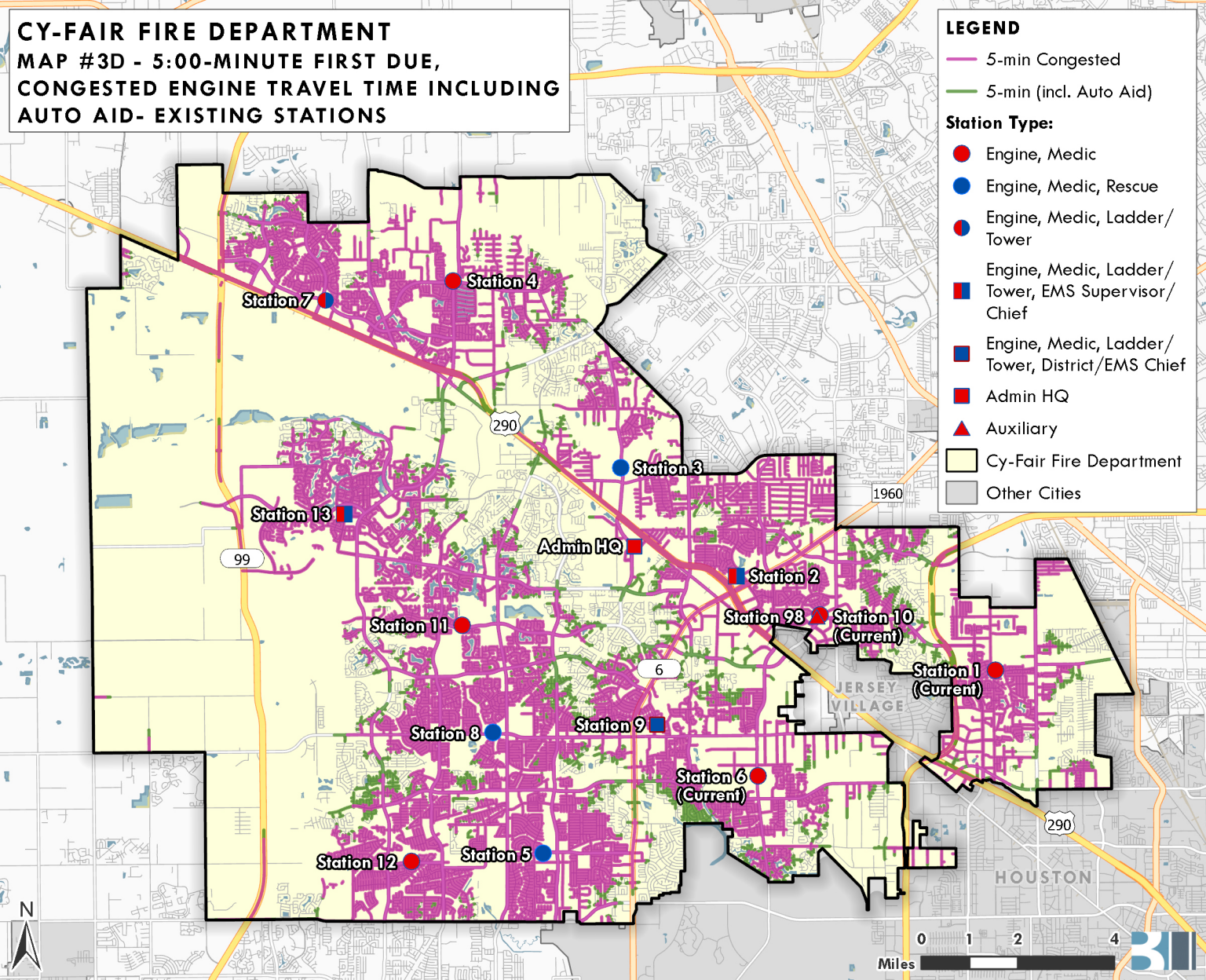
**CY-FAIR FIRE DEPARTMENT**  
**MAP #3D - 5:00-MINUTE FIRST DUE,**  
**CONGESTED ENGINE TRAVEL TIME INCLUDING**  
**AUTO AID- EXISTING STATIONS**

**LEGEND**

5-min Congested  
5-min (incl. Auto Aid)

**Station Type:**

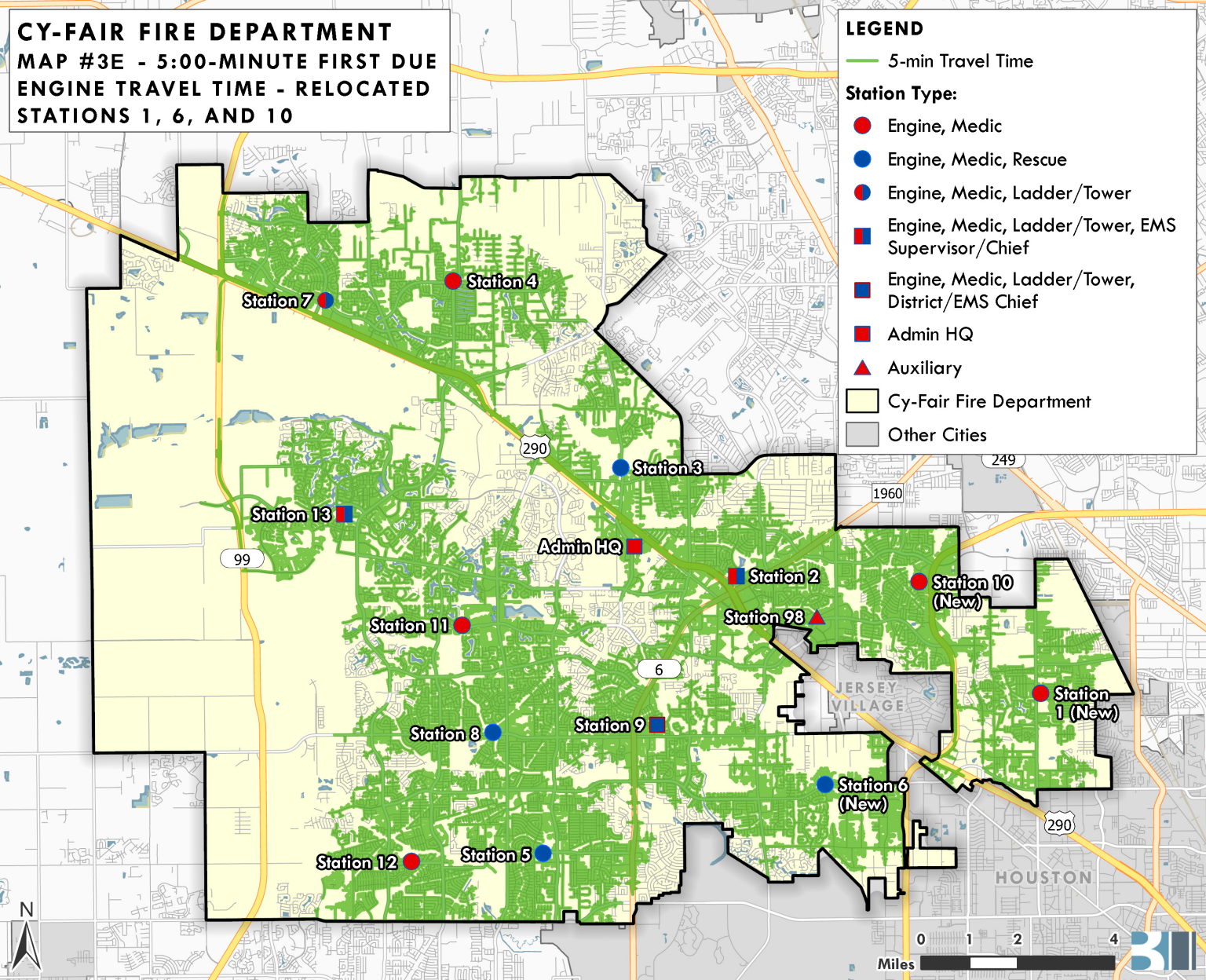
- Engine, Medic
- Engine, Medic, Rescue
- Engine, Medic, Ladder/  
Tower
- Engine, Medic, Ladder/  
Tower, EMS Supervisor/  
Chief
- Engine, Medic, Ladder/  
Tower, District/EMS Chief
- Admin HQ
- Auxiliary
- Cy-Fair Fire Department
- Other Cities



**CY-FAIR FIRE DEPARTMENT**  
**MAP #3E - 5:00-MINUTE FIRST DUE**  
**ENGINE TRAVEL TIME - RELOCATED**  
**STATIONS 1, 6, AND 10**

**LEGEND**

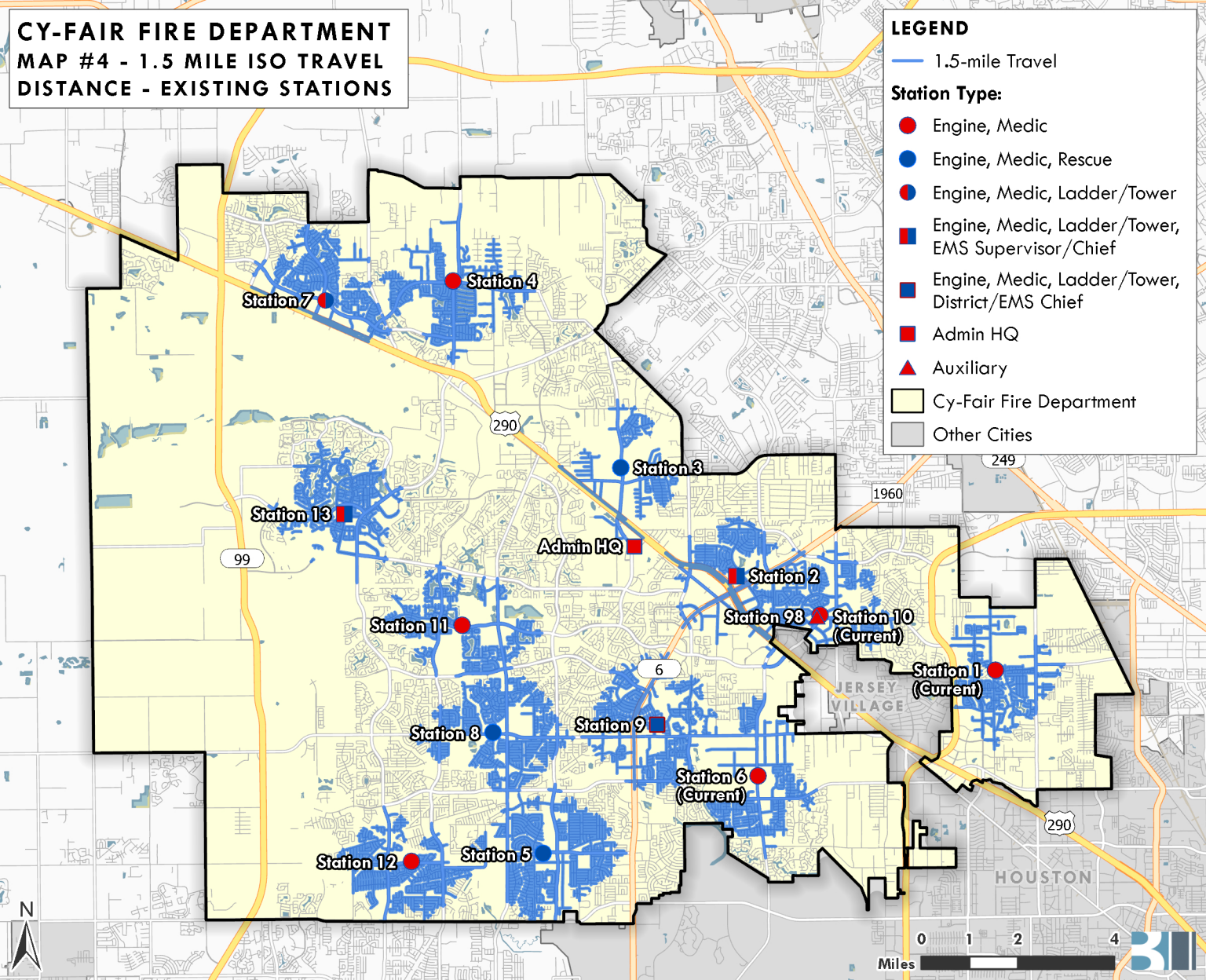
- 5-min Travel Time
- Station Type:**
  - Engine, Medic
  - Engine, Medic, Rescue
  - Engine, Medic, Ladder/Tower
  - Engine, Medic, Ladder/Tower, EMS Supervisor/Chief
  - Engine, Medic, Ladder/Tower, District/EMS Chief
  - Admin HQ
  - Auxiliary
- Cy-Fair Fire Department
- Other Cities



**CY-FAIR FIRE DEPARTMENT  
MAP #4 - 1.5 MILE ISO TRAVEL  
DISTANCE - EXISTING STATIONS**

**LEGEND**

- 1.5-mile Travel
- Station Type:**
  - Engine, Medic
  - Engine, Medic, Rescue
  - Engine, Medic, Ladder /Tower
  - Engine, Medic, Ladder /Tower, EMS Supervisor /Chief
  - Engine, Medic, Ladder /Tower, District /EMS Chief
  - Admin HQ
  - Auxiliary
- Cy-Fair Fire Department
- Other Cities



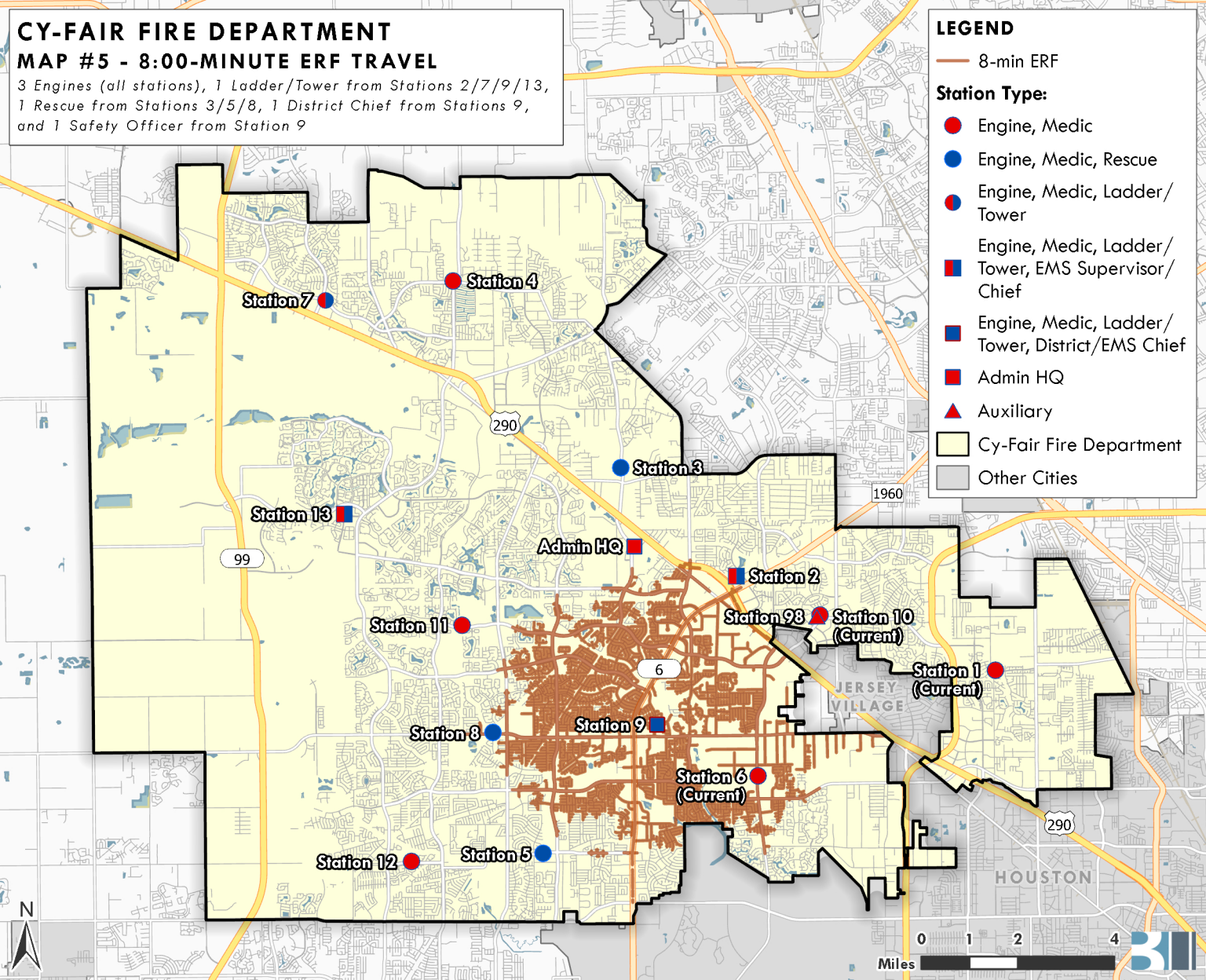
# CY-FAIR FIRE DEPARTMENT

## MAP #5 - 8:00-MINUTE ERF TRAVEL

3 Engines (all stations), 1 Ladder/Tower from Stations 2/7/9/13,  
1 Rescue from Stations 3/5/8, 1 District Chief from Stations 9,  
and 1 Safety Officer from Station 9

### LEGEND

- 8-min ERF
- Station Type:**
  - Engine, Medic
  - Engine, Medic, Rescue
  - Engine, Medic, Ladder/Tower
  - Engine, Medic, Ladder/Tower, EMS Supervisor/Chief
  - Engine, Medic, Ladder/Tower, District/EMS Chief
  - Admin HQ
  - Auxiliary
- Cy-Fair Fire Department
- Other Cities



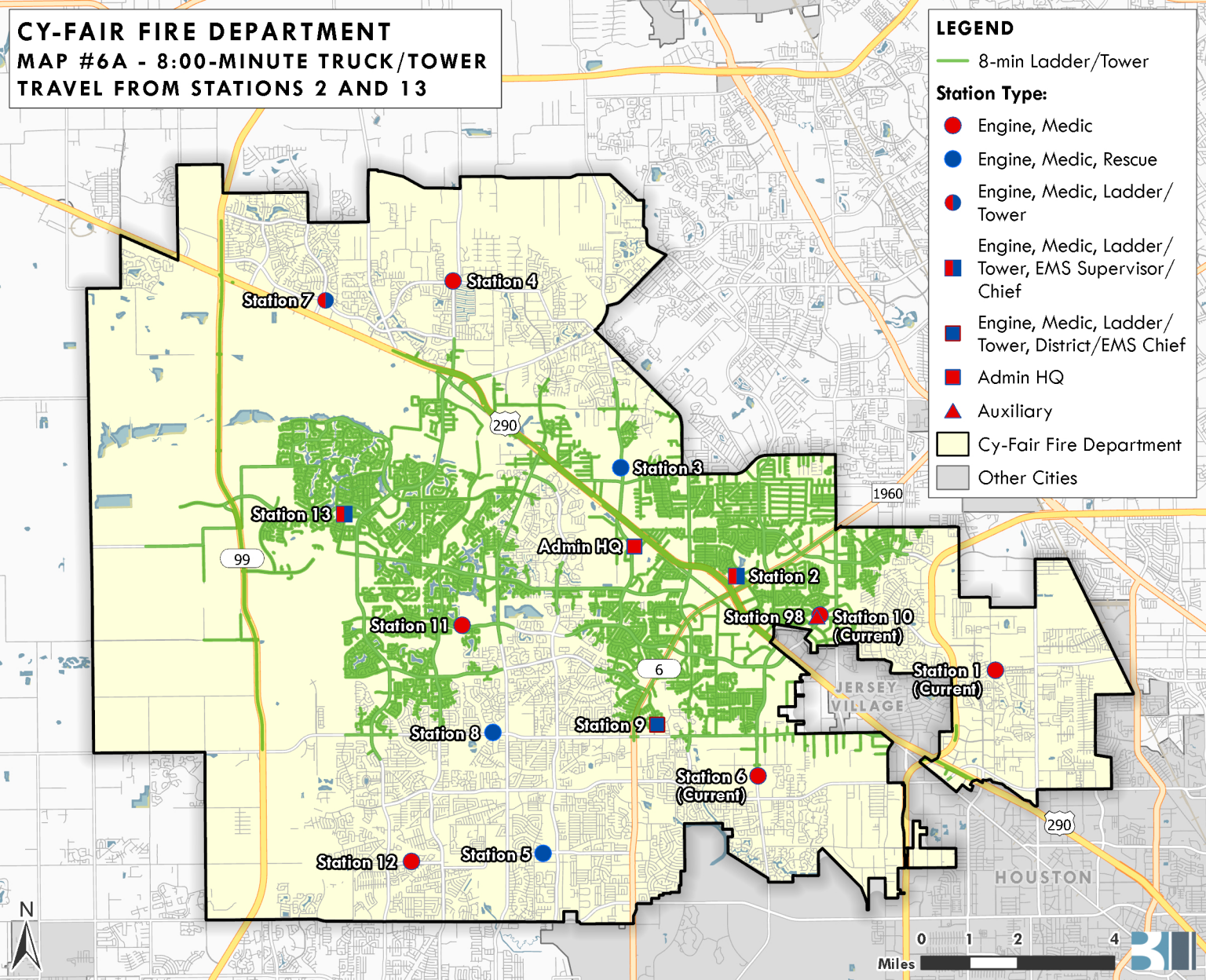
**CY-FAIR FIRE DEPARTMENT**  
**MAP #6A - 8:00-MINUTE TRUCK/TOWER**  
**TRAVEL FROM STATIONS 2 AND 13**

**LEGEND**

8-min Ladder/Tower

**Station Type:**

- Engine, Medic
- Engine, Medic, Rescue
- Engine, Medic, Ladder/  
Tower
- Engine, Medic, Ladder/  
Tower, EMS Supervisor/  
Chief
- Engine, Medic, Ladder/  
Tower, District/EMS Chief
- Admin HQ
- Auxiliary
- Cy-Fair Fire Department
- Other Cities



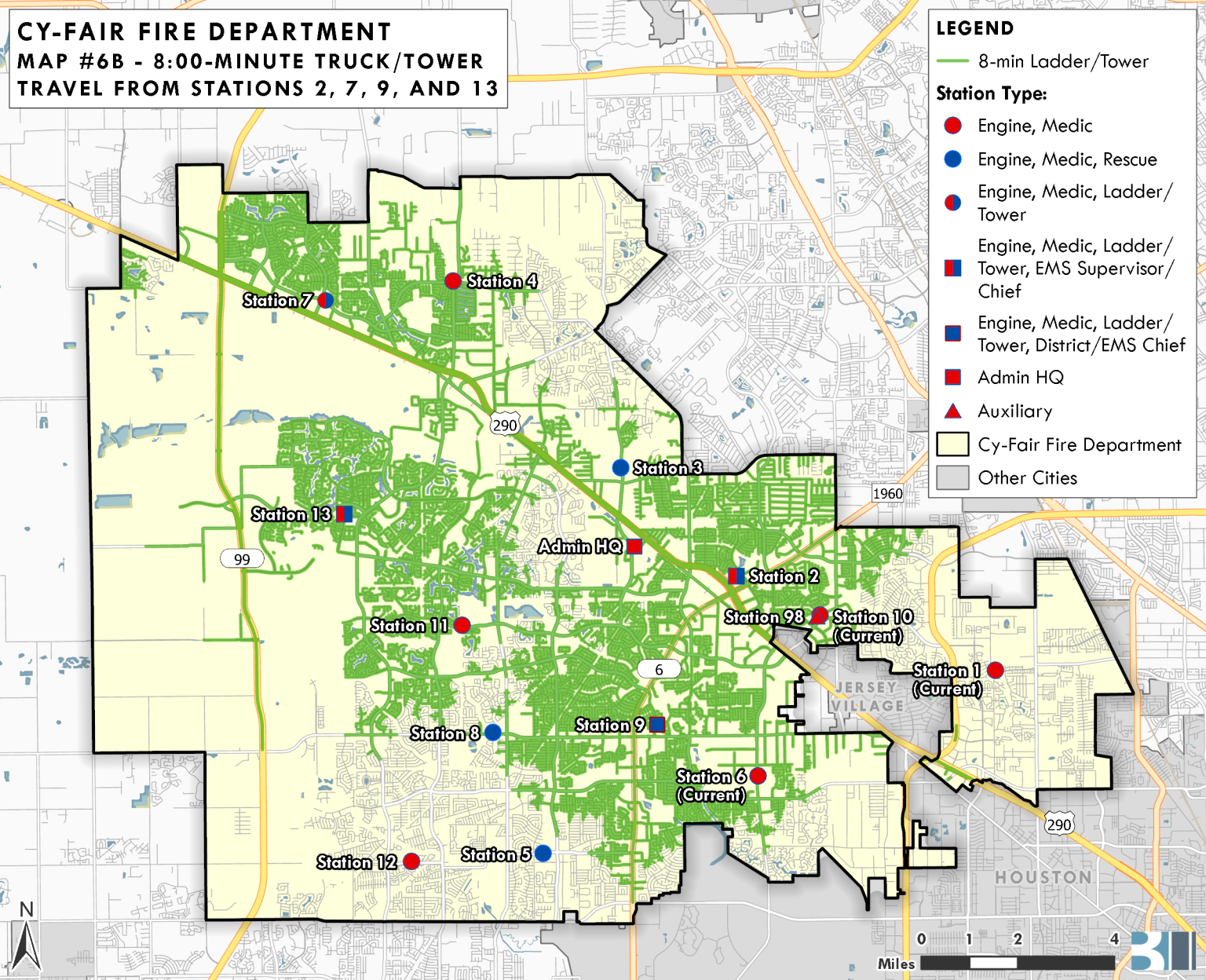
**CY-FAIR FIRE DEPARTMENT**  
**MAP #6B - 8:00-MINUTE TRUCK/TOWER**  
**TRAVEL FROM STATIONS 2, 7, 9, AND 13**

**LEGEND**

8-min Ladder/Tower

**Station Type:**

- Engine, Medic
- Engine, Medic, Rescue
- Engine, Medic, Ladder/Tower
- Engine, Medic, Ladder/Tower, EMS Supervisor/Chief
- Engine, Medic, Ladder/Tower, District/EMS Chief
- Admin HQ
- Auxiliary
- Cy-Fair Fire Department
- Other Cities



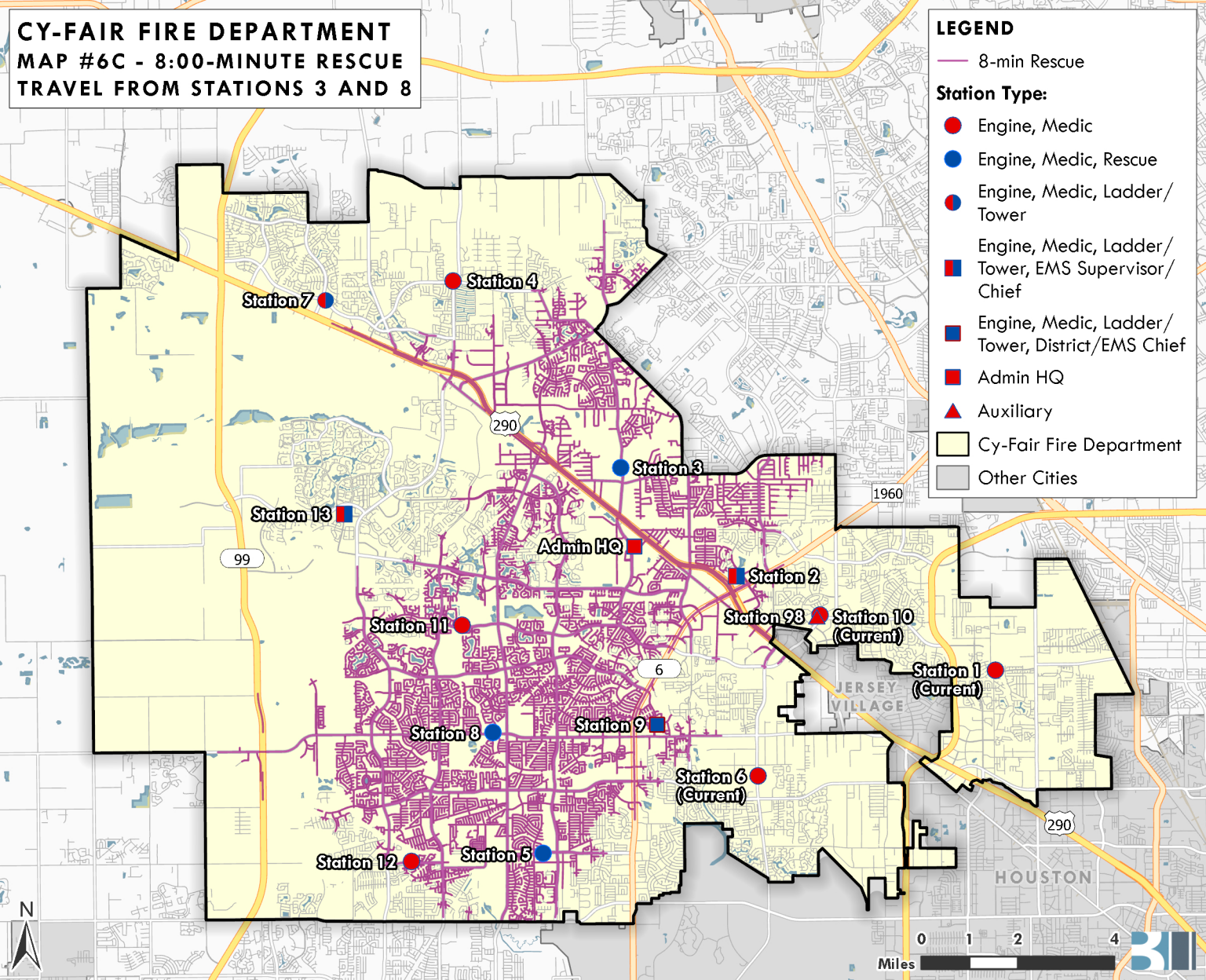
**CY-FAIR FIRE DEPARTMENT**  
**MAP #6C - 8:00-MINUTE RESCUE**  
**TRAVEL FROM STATIONS 3 AND 8**

**LEGEND**

— 8-min Rescue

**Station Type:**

- Engine, Medic
- Engine, Medic, Rescue
- Engine, Medic, Ladder/  
Tower
- Engine, Medic, Ladder/  
Tower, EMS Supervisor/  
Chief
- Engine, Medic, Ladder/  
Tower, District/EMS Chief
- Admin HQ
- ▲ Auxiliary
- Cy-Fair Fire Department
- Other Cities



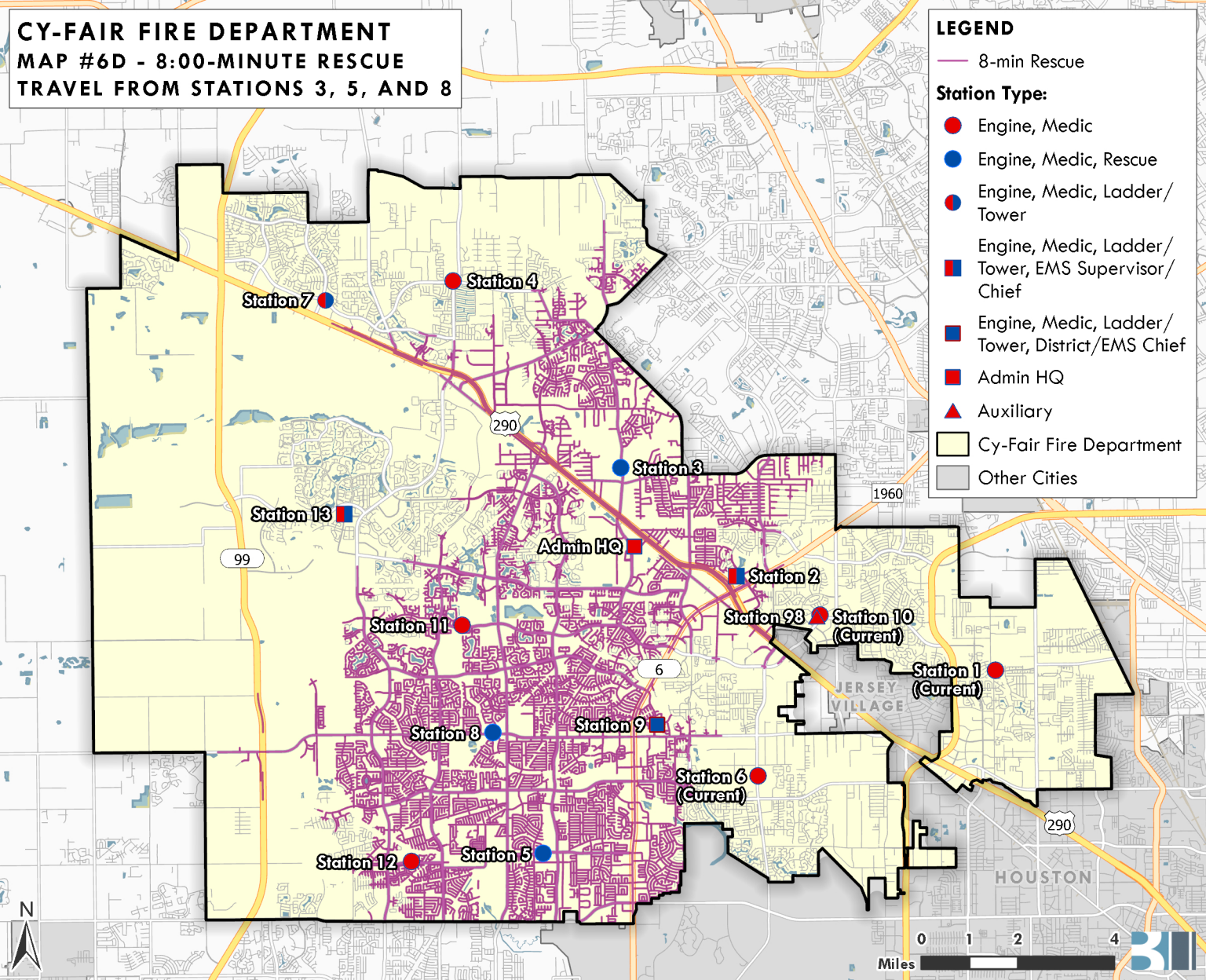
**CY-FAIR FIRE DEPARTMENT**  
**MAP #6D - 8:00-MINUTE RESCUE**  
**TRAVEL FROM STATIONS 3, 5, AND 8**

**LEGEND**

— 8-min Rescue

**Station Type:**

- Engine, Medic
- Engine, Medic, Rescue
- Engine, Medic, Ladder/  
Tower
- Engine, Medic, Ladder/  
Tower, EMS Supervisor/  
Chief
- Engine, Medic, Ladder/  
Tower, District/EMS Chief
- Admin HQ
- ▲ Auxiliary
- Cy-Fair Fire Department
- Other Cities



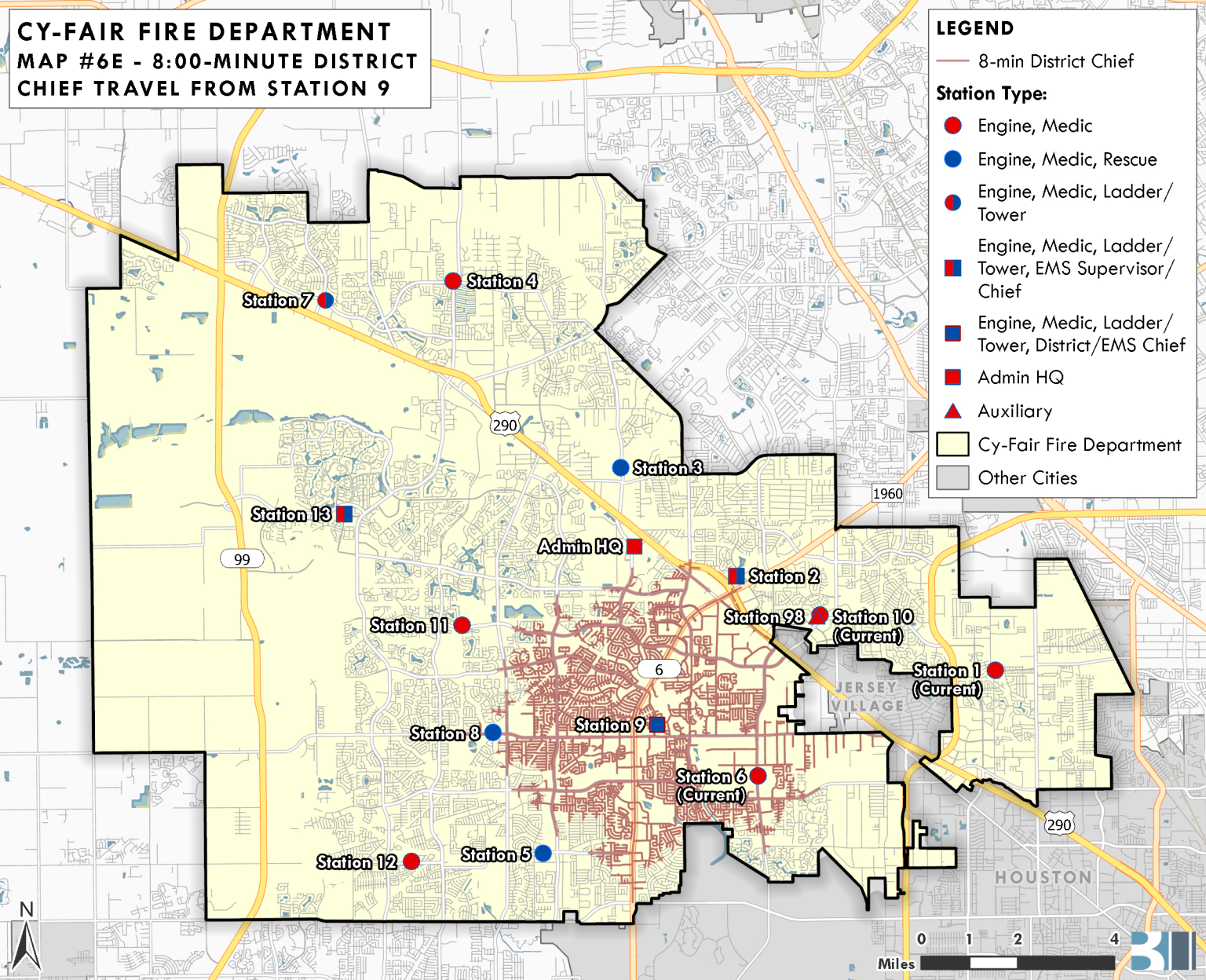
**CY-FAIR FIRE DEPARTMENT**  
**MAP #6E - 8:00-MINUTE DISTRICT**  
**CHIEF TRAVEL FROM STATION 9**

**LEGEND**

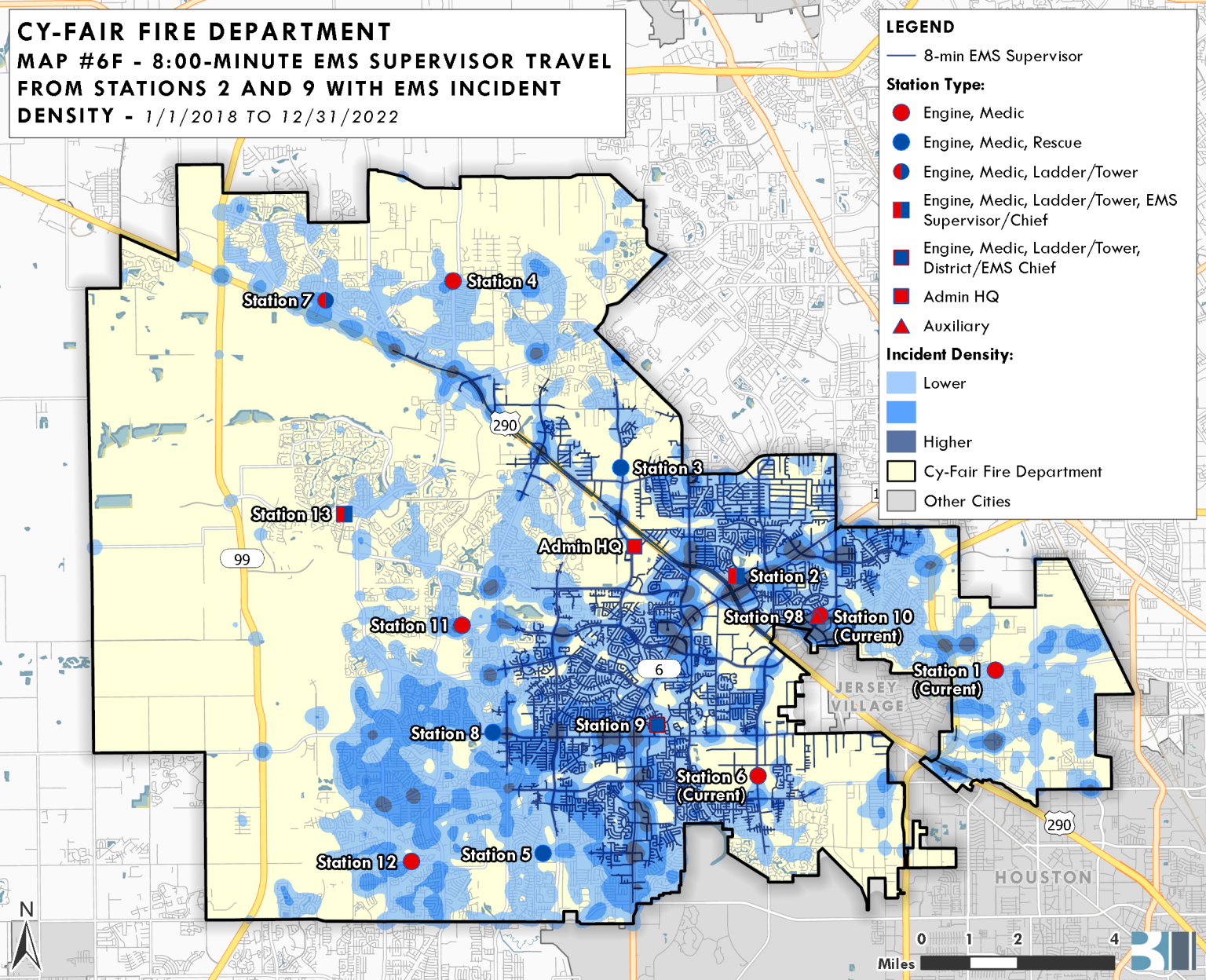
— 8-min District Chief

**Station Type:**

- Engine, Medic
- Engine, Medic, Rescue
- Engine, Medic, Ladder/  
Tower
- Engine, Medic, Ladder/  
Tower, EMS Supervisor/  
Chief
- Engine, Medic, Ladder/  
Tower, District/EMS Chief
- Admin HQ
- ▲ Auxiliary
- Cy-Fair Fire Department
- Other Cities



**CY-FAIR FIRE DEPARTMENT**  
**MAP #6F - 8:00-MINUTE EMS SUPERVISOR TRAVEL**  
**FROM STATIONS 2 AND 9 WITH EMS INCIDENT**  
**DENSITY - 1/1/2018 TO 12/31/2022**



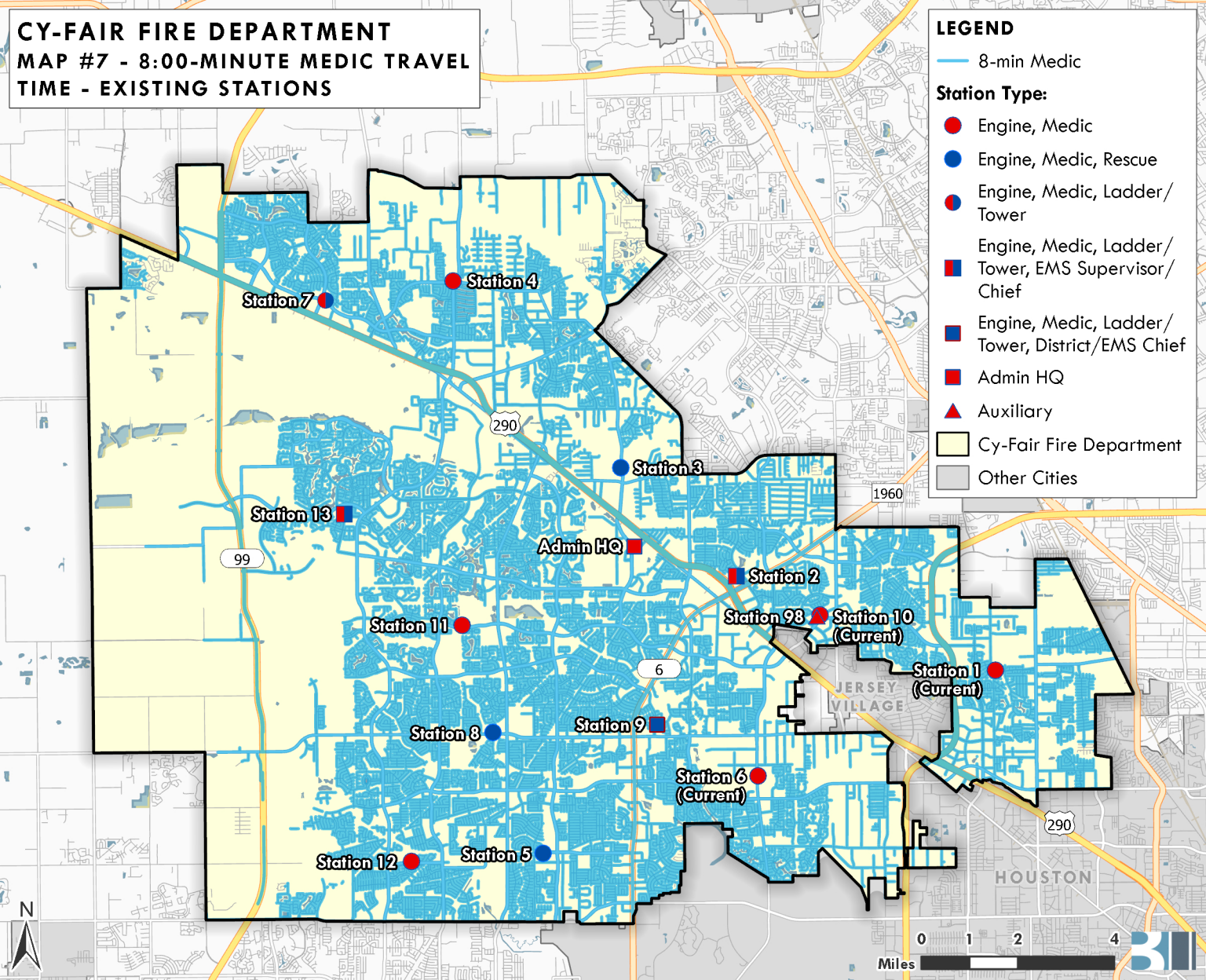
**CY-FAIR FIRE DEPARTMENT**  
**MAP #7 - 8:00-MINUTE MEDIC TRAVEL**  
**TIME - EXISTING STATIONS**

**LEGEND**

— 8-min Medic

**Station Type:**

- Engine, Medic
- Engine, Medic, Rescue
- Engine, Medic, Ladder/  
Tower
- Engine, Medic, Ladder/  
Tower, EMS Supervisor/  
Chief
- Engine, Medic, Ladder/  
Tower, District/EMS Chief
- Admin HQ
- ▲ Auxiliary
- Cy-Fair Fire Department
- Other Cities



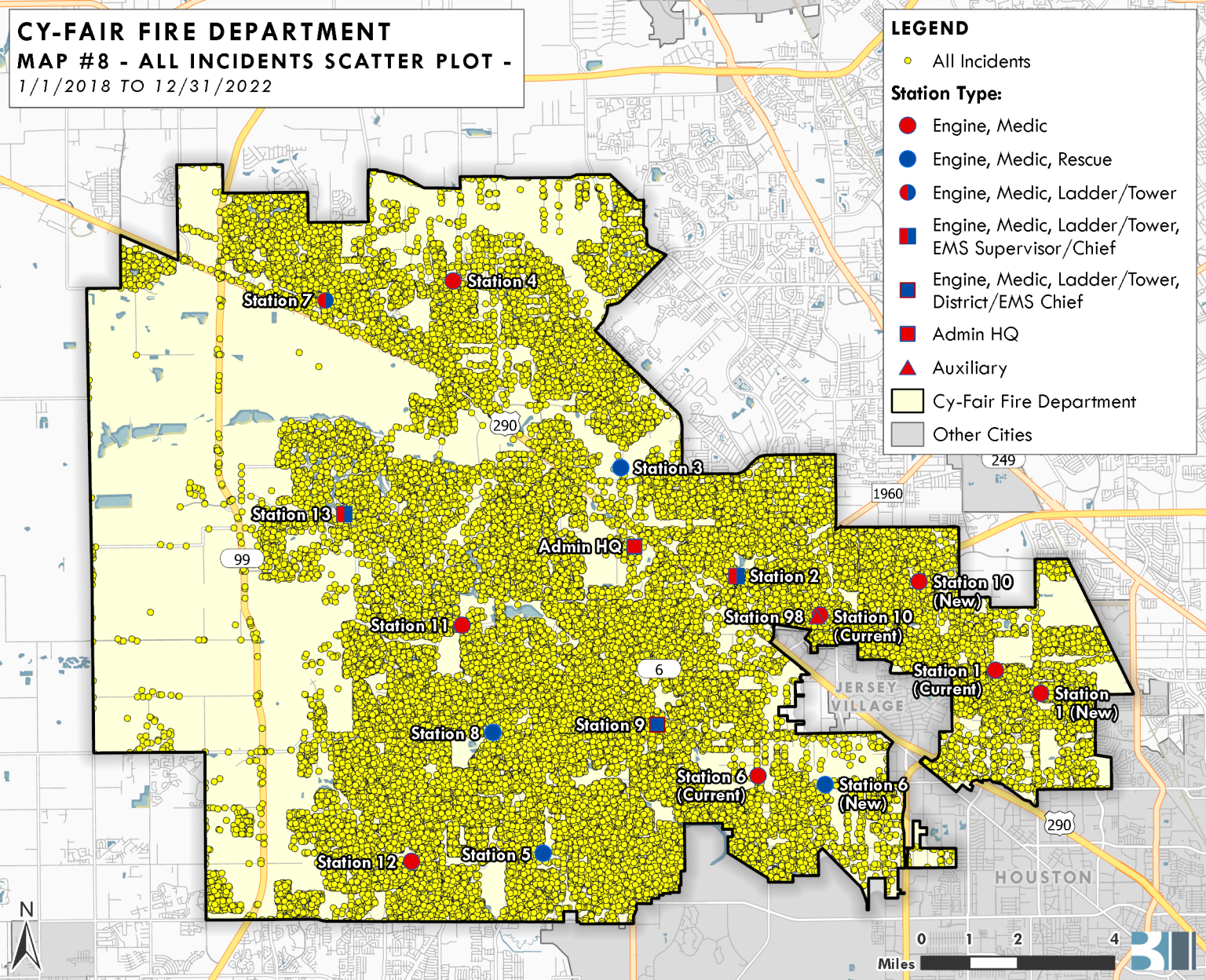
**CY-FAIR FIRE DEPARTMENT**  
**MAP #8 - ALL INCIDENTS SCATTER PLOT -**  
1/1/2018 TO 12/31/2022

**LEGEND**

- All Incidents

**Station Type:**

- Engine, Medic
- Engine, Medic, Rescue
- Engine, Medic, Ladder /Tower
- Engine, Medic, Ladder /Tower, EMS Supervisor /Chief
- Engine, Medic, Ladder /Tower, District /EMS Chief
- Admin HQ
- ▲ Auxiliary
- Cy-Fair Fire Department
- Other Cities



**CY-FAIR FIRE DEPARTMENT**  
**MAP #9 - EMS/RESCUE INCIDENTS**  
**SCATTER PLOT - 1/1/2018 TO 12/31/2022**

**LEGEND**

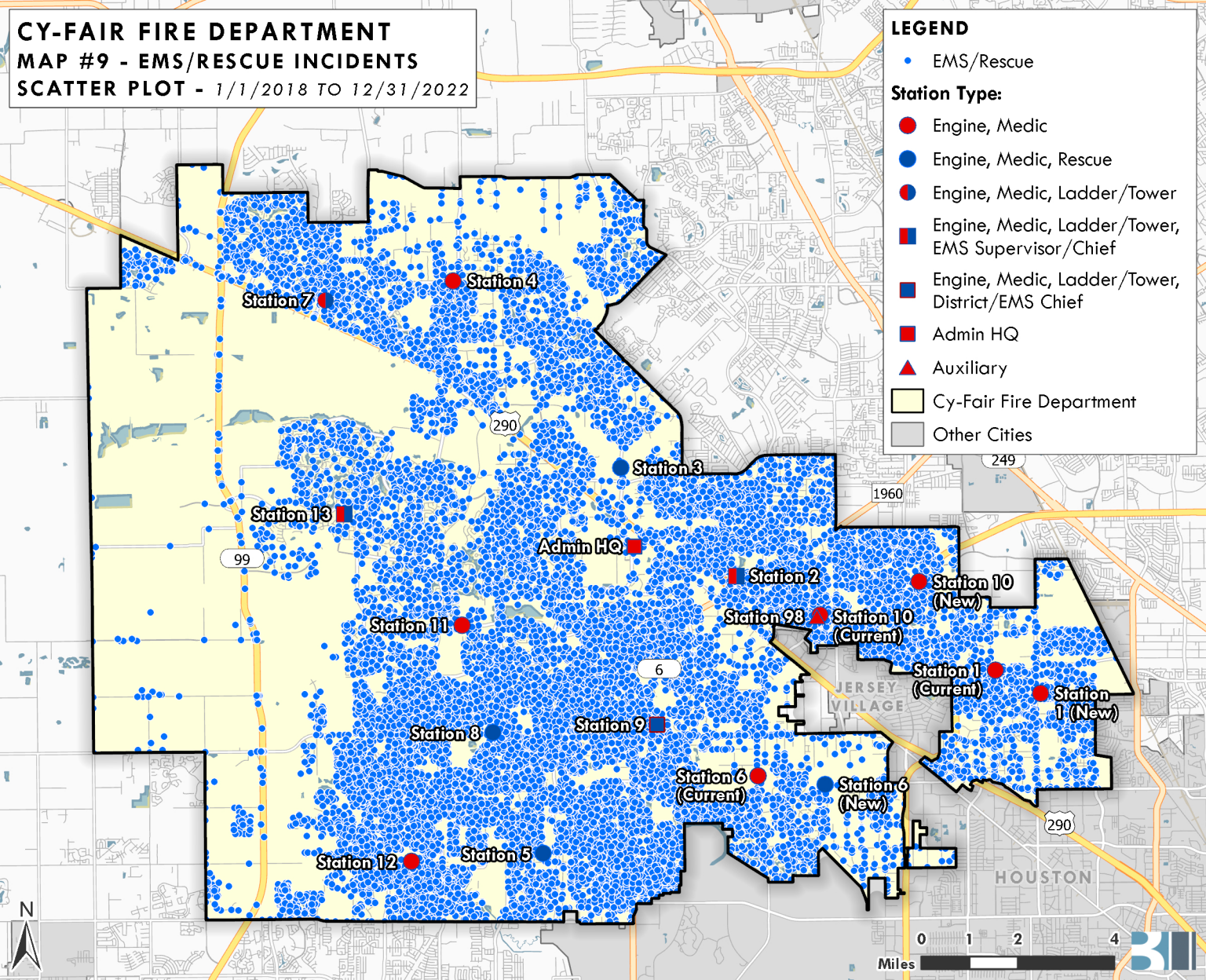
- EMS/Rescue

**Station Type:**

- Engine, Medic
- Engine, Medic, Rescue
- Engine, Medic, Ladder /Tower
- Engine, Medic, Ladder /Tower, EMS Supervisor /Chief
- Engine, Medic, Ladder /Tower, District /EMS Chief
- Admin HQ
- ▲ Auxiliary

■ Cy-Fair Fire Department

■ Other Cities



**CY-FAIR FIRE DEPARTMENT**  
**MAP #10 - ALL FIRES INCIDENTS**  
**SCATTER PLOT - 1/1/2018 TO 12/31/2022**

**LEGEND**

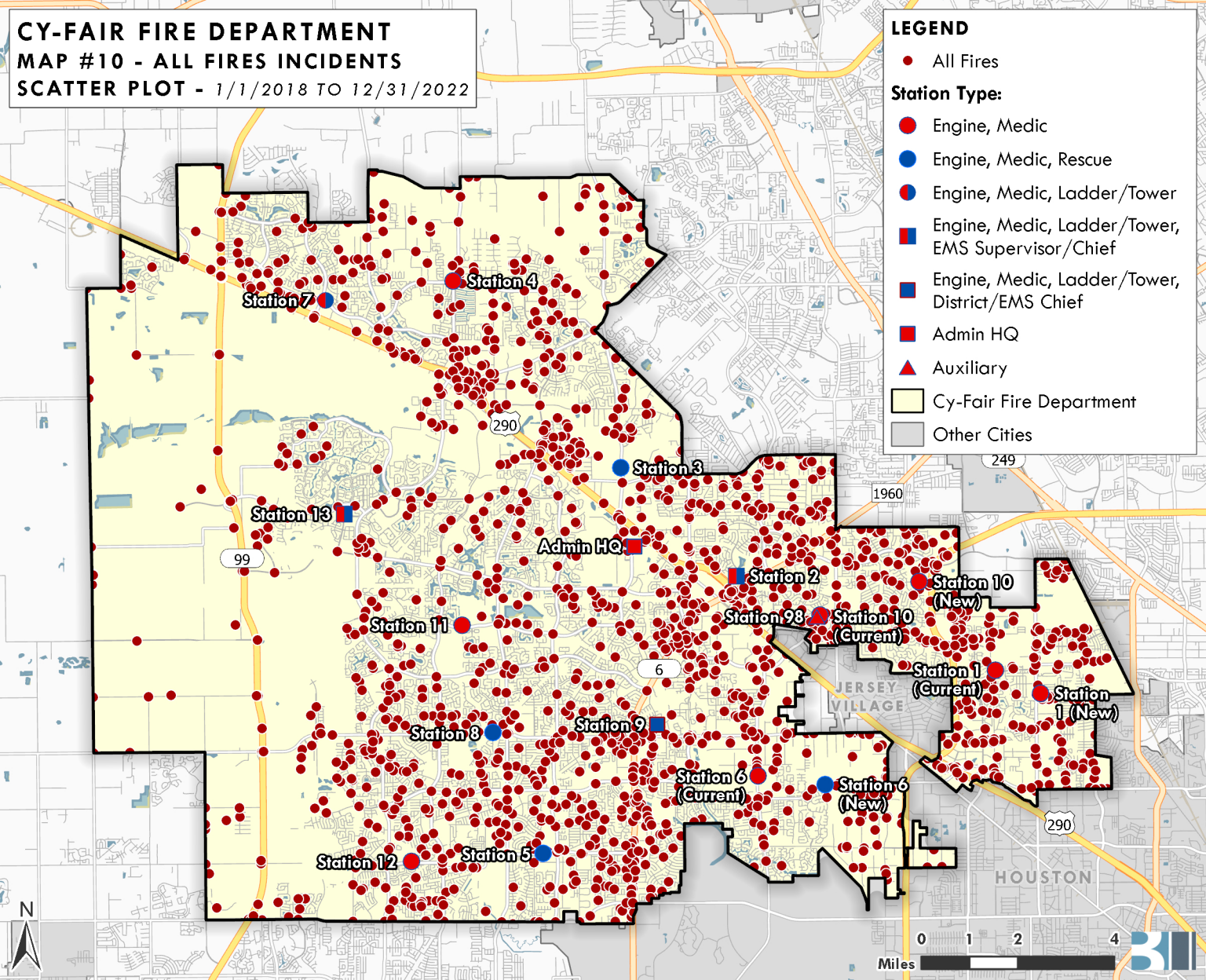
- All Fires

**Station Type:**

- Engine, Medic
- Engine, Medic, Rescue
- Engine, Medic, Ladder /Tower
- Engine, Medic, Ladder /Tower, EMS Supervisor /Chief
- Engine, Medic, Ladder /Tower, District /EMS Chief
- Admin HQ
- ▲ Auxiliary

■ Cy-Fair Fire Department

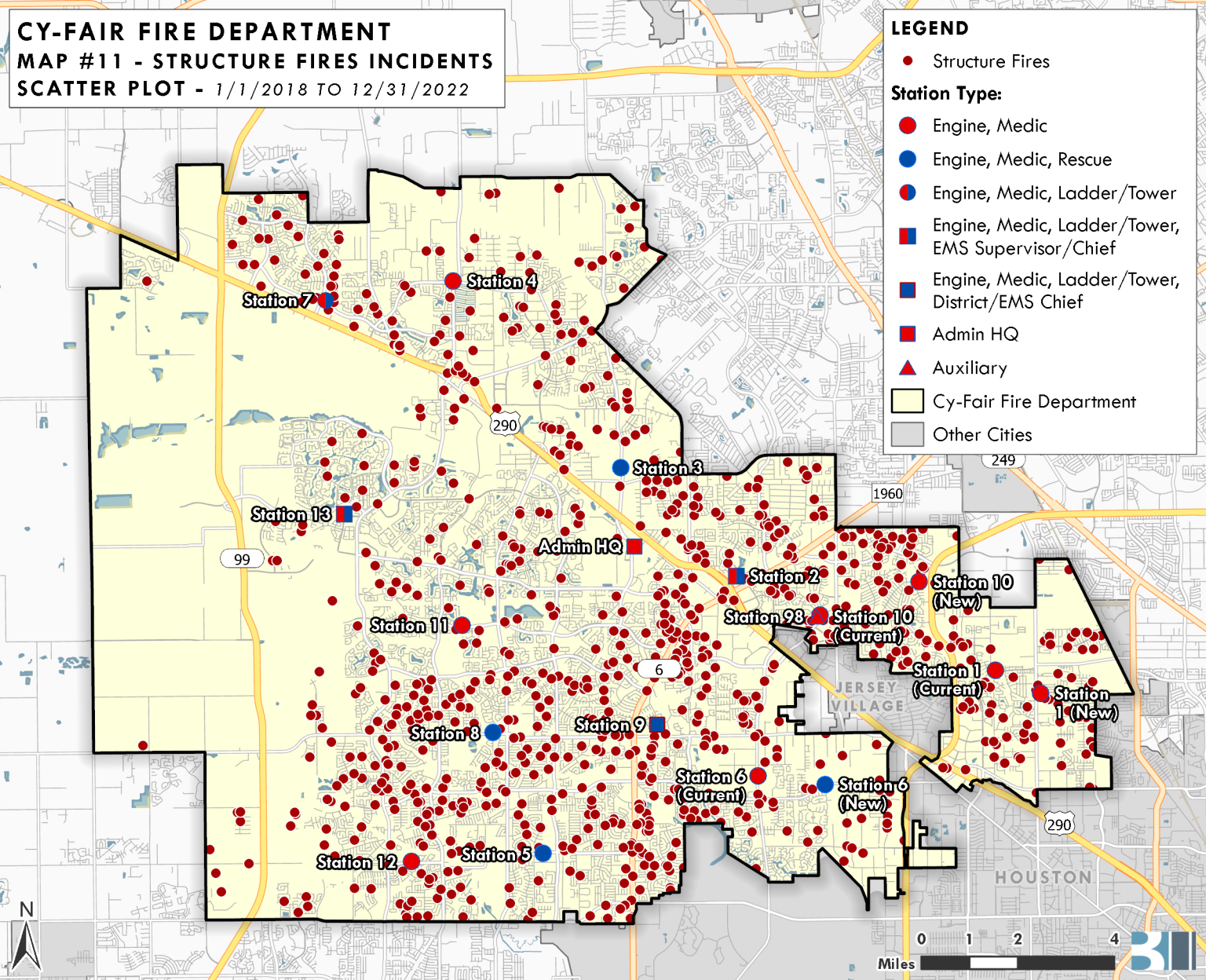
■ Other Cities



**CY-FAIR FIRE DEPARTMENT**  
**MAP #11 - STRUCTURE FIRES INCIDENTS**  
**SCATTER PLOT - 1/1/2018 TO 12/31/2022**

**LEGEND**

- Structure Fires
- Station Type:**
  - Engine, Medic
  - Engine, Medic, Rescue
  - Engine, Medic, Ladder /Tower
  - Engine, Medic, Ladder /Tower, EMS Supervisor /Chief
  - Engine, Medic, Ladder /Tower, District /EMS Chief
  - Admin HQ
  - ▲ Auxiliary
- Cy-Fair Fire Department
- Other Cities



**CY-FAIR FIRE DEPARTMENT**  
**MAP #12 - EMS/RESCUE INCIDENT DENSITY &**  
**HOT SPOTS - 1/1/2018 TO 12/31/2022**

**LEGEND**

**Station Type:**

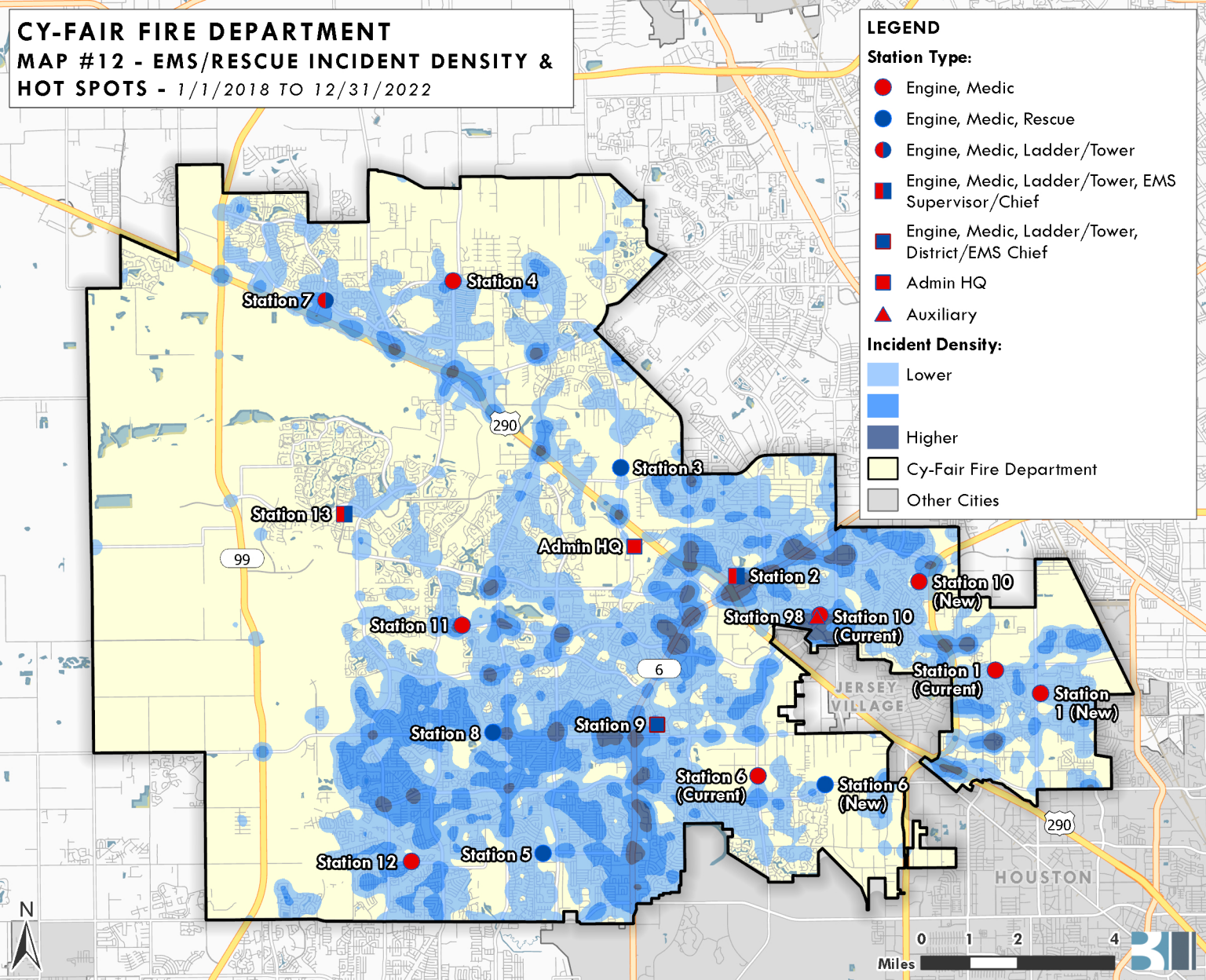
- Engine, Medic
- Engine, Medic, Rescue
- Engine, Medic, Ladder/Tower
- Engine, Medic, Ladder/Tower, EMS Supervisor/Chief
- Engine, Medic, Ladder/Tower, District/EMS Chief
- Admin HQ
- ▲ Auxiliary

**Incident Density:**

- Lower
- Higher

■ Cy-Fair Fire Department

■ Other Cities



**CY-FAIR FIRE DEPARTMENT**  
**MAP #13 - ALL FIRES DENSITY & HOT SPOTS -**  
**1/1/2018 TO 12/31/2022**

**LEGEND**

**Station Type:**

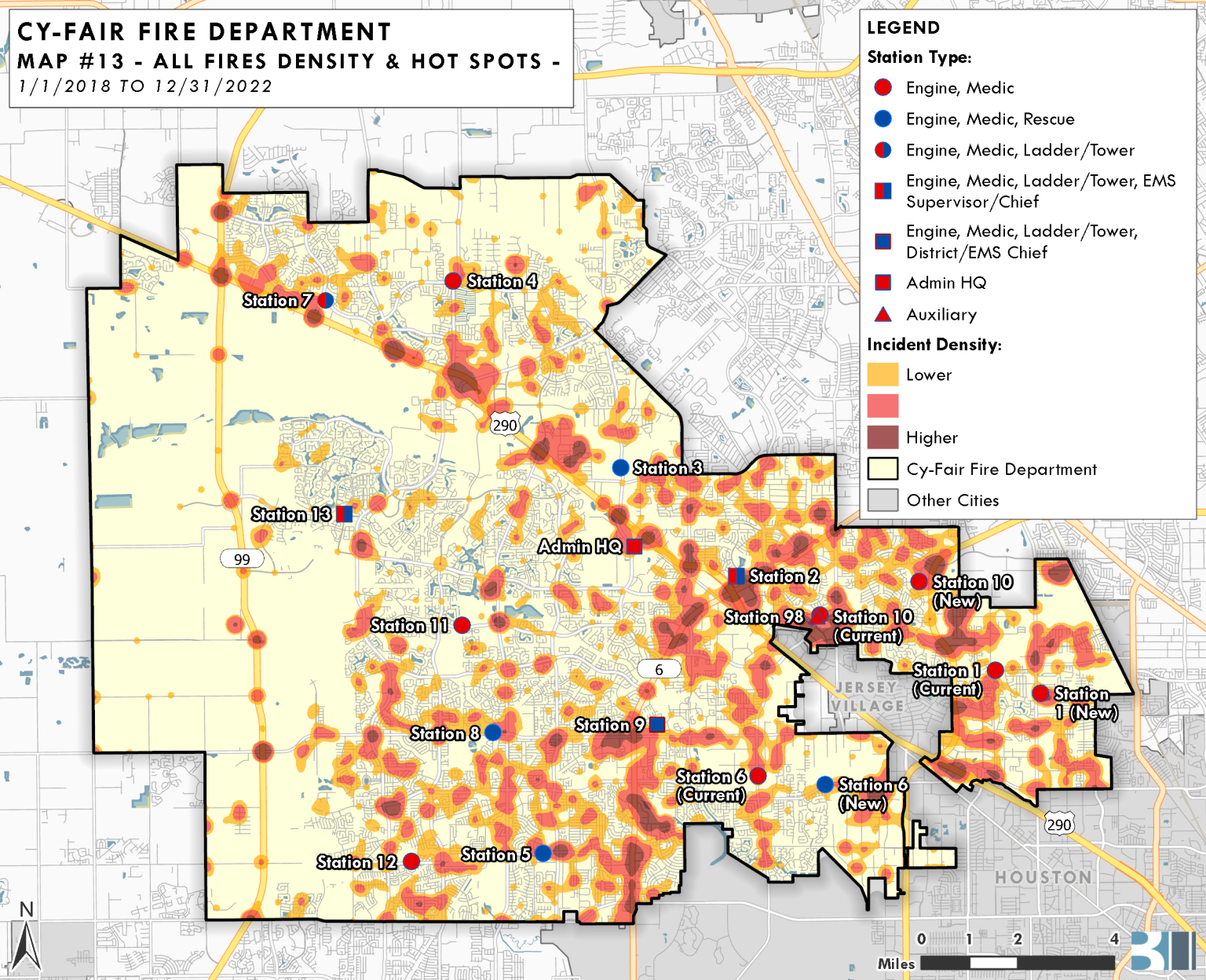
- Engine, Medic
- Engine, Medic, Rescue
- Engine, Medic, Ladder/Tower
- Engine, Medic, Ladder/Tower, EMS Supervisor/Chief
- Engine, Medic, Ladder/Tower, District/EMS Chief
- Admin HQ
- ▲ Auxiliary

**Incident Density:**

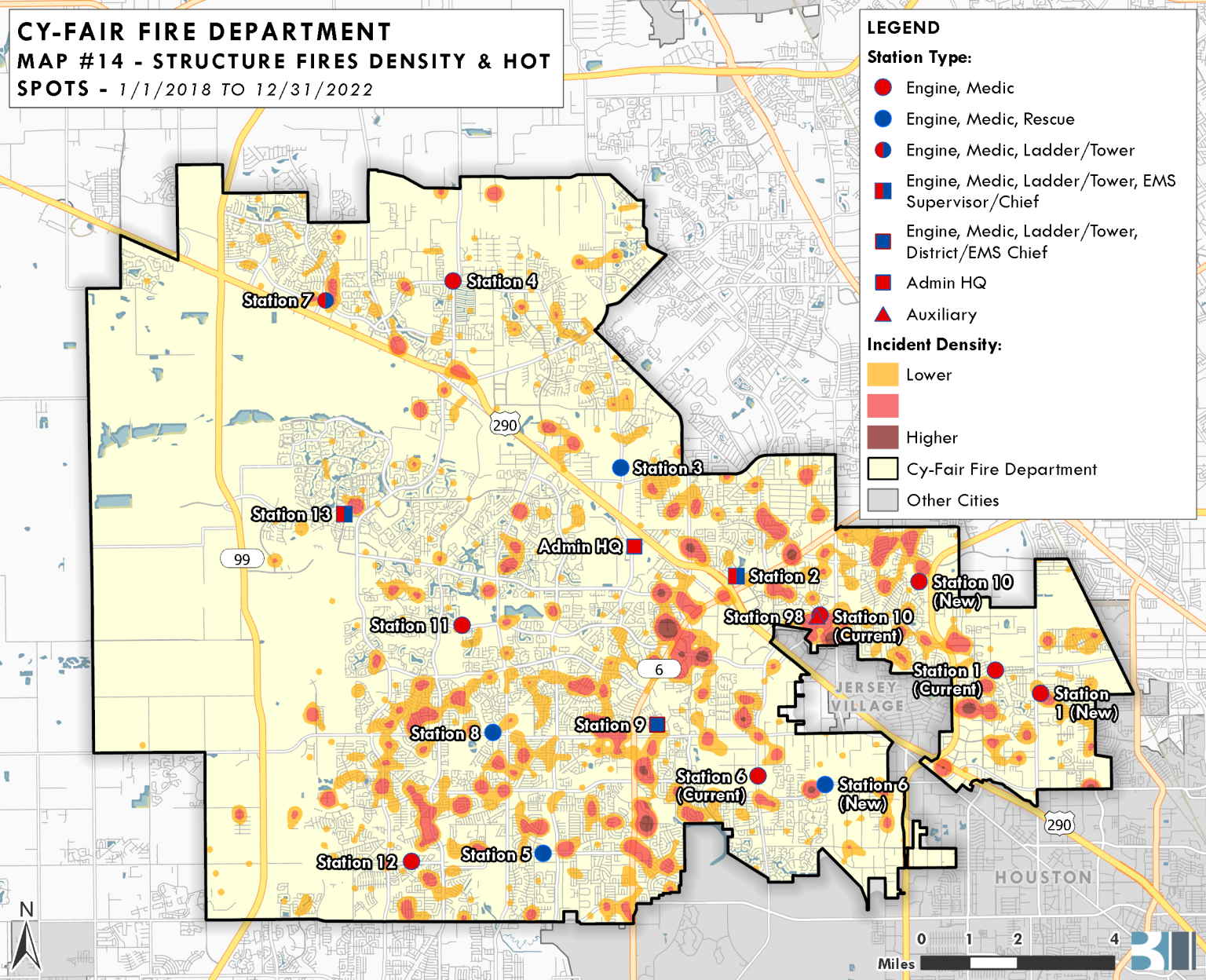
- Lower
- Higher

■ Cy-Fair Fire Department

■ Other Cities



**CY-FAIR FIRE DEPARTMENT**  
**MAP #14 - STRUCTURE FIRES DENSITY & HOT**  
**SPOTS - 1/1/2018 TO 12/31/2022**



**CY-FAIR FIRE DEPARTMENT**  
**MAP #15 - 5:00-MINUTE FIRST DUE**  
**ENGINE TRAVEL TIME - RELOCATED STATIONS**  
**1, 6, 10, AND TEST STATION LOCATIONS**

- LEGEND**
- 5-min Existing/Infill Overlap
  - 5-min Infill (Test A, B, & C Only)
  - 5-min Travel Time
  - MTFP Proposed Thoroughfares
  - Station Test Locations
- Station Type:**
- Engine, Medic
  - Engine, Medic, Rescue
  - Engine, Medic, Ladder/Tower
  - Engine, Medic, Ladder/Tower, EMS Supervisor/Chief
  - Engine, Medic, Ladder/Tower, District/EMS Chief
  - Admin HQ
  - Auxiliary
- Cy-Fair Fire Department  
Other Cities

